

Lamin B1 Rabbit mAb (AR1099)

Key Features

Host Species:	Rabbit
Reactivity:	Human, Mouse, Rat
Applications:	WB, IHC, IF, IP, ELISA
Isotype:	IgG, Kappa
MW:	67kD (Calculated) 67kD (Observed)

Recommended Dilution Ratios

IHC	1:200-1000
WB:	1:1000-5000
IF:	1:200-1000
ELISA:	1:5000-20000
IP:	1:50-200

Storage -15°C to -25°C/1 year (Do not lower than -25°C)

Basic Information

Clonality Monoclonal

Immunogen Information

Specificity Endogenous

Target Information

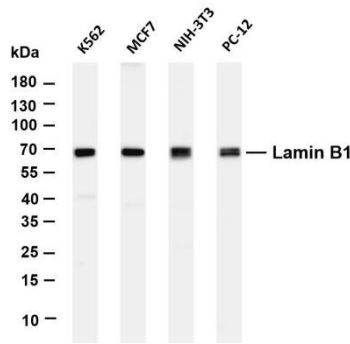
Gene name LMNB1
 Protein Name Lamin-B1

Organism	Gene ID	UniProt ID
Human	4001	P20700
Mouse	16906	P14733
Rat	116685	P70615

Cellular Localization Nucleus

Tissue specificity Brain, Cajal-Retzius cell, Epithelium, Eye, Fetal brain cortex, Ovarian carcinoma, Placenta, Uterus

Validation Data



Various whole cell lysates were separated by 4-20% SDS-PAGE, and the membrane was blotted with anti-Lamin B1 antibody. The HRP conjugated Goat anti-Rabbit IgG(H + L) antibody was used to detect the antibody.

Lane 1: K562

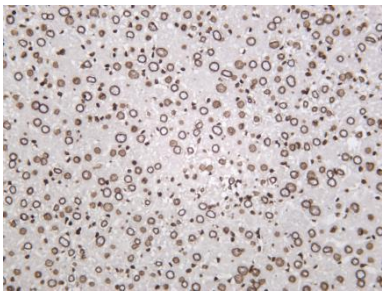
Lane 2: MCF7

Lane 3: NIH-3T3

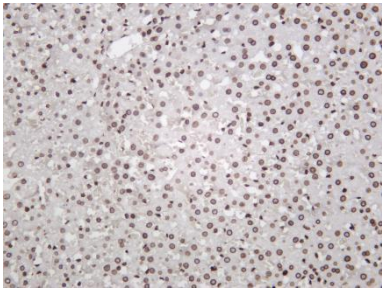
Lane 4: PC-12

Predicted band size: 67kDa

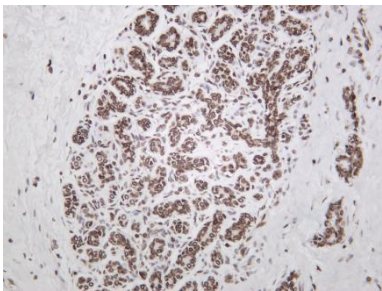
Observed band size: 67kDa



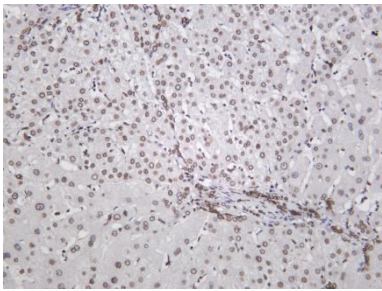
Mouse liver was stained with Anti-Lamin B1 rabbit antibody



Rat liver was stained with Anti-Lamin B1 rabbit antibody



Human breast carcinoma was stained with Anti-Lamin B1 rabbit antibody



Human liver was stained with Anti-Lamin B1 rabbit antibody