

# TOMM20 Rabbit mAb (AR1100)

## Key Features

Host Species:	Rabbit
Reactivity:	Human,Mouse,Rat
Applications:	WB,IHC,IF,IP,ELISA
Isotype:	IgG,Kappa
MW:	16kD (Calculated) 16kD (Observed)

## Recommended Dilution Ratios

IHC	1:100-500
WB:	1:1000-5000
IF:	1:200-1000
ELISA:	1:5000-20000
IP:	1:50-200

**Storage** -15°C to -25°C/1 year (Do not lower than -25°C)

## Basic Information

Clonality Monoclonal

## Immunogen Information

Specificity Endogenous

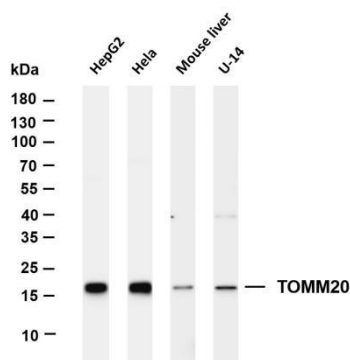
## Target Information

Gene name TOMM20  
Protein Name Mitochondrial import receptor subunit TOM20 homolog

Organism	Gene ID	UniProt ID
Human	9804	Q15388
Mouse	67952	Q9DCC8
Rat	266601	Q62760

Cellular Localization Membranous  
Tissue specificity Bone marrow, Brain, Cervix, Epithelium, Eye, Fibroblast, Pancreas

## Validation Data



Various whole cell lysates were separated by 4-20% SDS-PAGE, and the membrane was blotted with anti-TOMM20 antibody. The HRP conjugated Goat anti-Rabbit IgG(H + L) antibody was used to detect the antibody.

Lane 1: HepG2

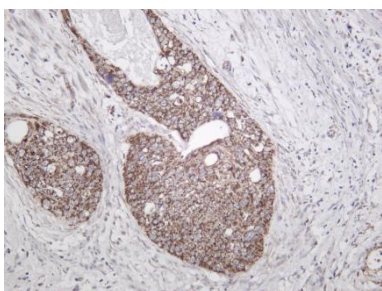
Lane 2: HeLa

Lane 3: Mouse liver

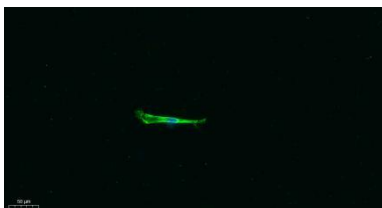
Lane 4: U-14

Predicted band size: 16kDa

Observed band size: 16kDa



Human cervical carcinoma was stained with Anti-TOMM20 rabbit antibody



Immunofluorescence analysis of A549.

1. primary Antibody was diluted at 1:200(4°C overnight).
2. Goat Anti Rabbit IgG (H&L) - Alexa Fluor 488 Secondary antibody was diluted at 1:1000(room temperature, 50min).
3. DAPI (blue) 10min.

For Research Use Only