

Iba1 Rabbit mAb (AR1101)

Key Features

Host Species:	Rabbit
Reactivity:	Human,Mouse,Rat
Applications:	WB,IHC,IF,IP,ELISA
Isotype:	IgG,Kappa
MW:	17kD (Calculated) 17kD (Observed)

Recommended Dilution Ratios

IHC	1:2000-4000
WB:	1:1000-5000
IF:	1:200-1000
ELISA:	1:5000-20000
IP:	1:50-200

Storage -15°C to -25°C/1 year (Do not lower than -25°C)

Basic Information

Clonality Monoclonal

Immunogen Information

Specificity Endogenous

Target Information

Gene Name IBA1 AIF1

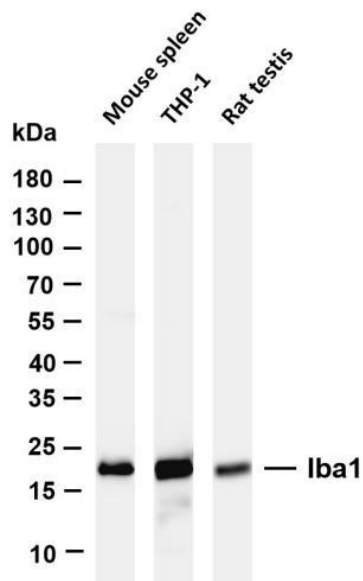
Protein Name AIF1 G1 IBA1

Organism	Gene ID	UniProt ID
Human	199	P55008
Mouse	11629	O70200
Rat	29427	P55009

Cellular Localization Cytoplasm

Tissue specificity Detected in T-lymphocytes and peripheral blood mononuclear cells.

Validation Data



Various whole cell lysates were separated by 4-20% SDS-PAGE, and the membrane was blotted with anti-Iba1 antibody. The HRP conjugated Goat anti-Rabbit IgG(H + L) antibody was used to detect the antibody.

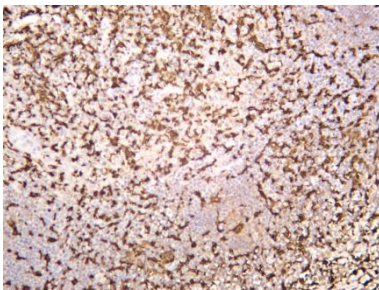
Lane 1: Mouse spleen

Lane 2: THP-1

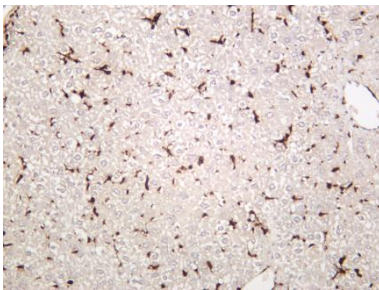
Lane 3: Rat testis

Predicted band size: 17kDa

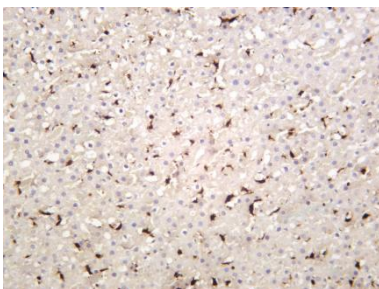
Observed band size: 17kDa



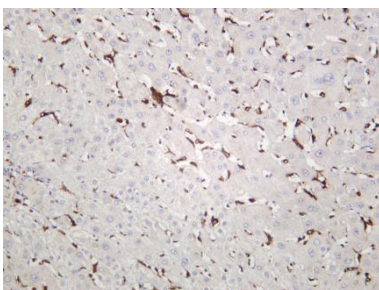
Human tonsil was stained with anti-Iba1 rabbit antibody



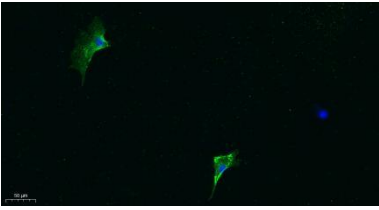
Mouse liver was stained with anti-Iba1 rabbit antibody



Rat liver was stained with anti-Iba1 rabbit antibody



Human liver was stained with anti-Iba1 rabbit antibody



Immunofluorescence analysis of A549.

1. primary Antibody was diluted at 1:200(4°C overnight).
2. Goat Anti Rabbit IgG (H&L) - Alexa Fluor 488 Secondary antibody was diluted at 1:1000(room temperature, 50min).
3. DAPI (blue) 10min.

For Research Use Only