

# Caspase-9 Rabbit mAb (AR1105)

## Key Features

Host Species:	Rabbit
Reactivity:	Human,Mouse
Applications:	WB,IF,ELISA
Isotype:	IgG,Kappa
MW:	46kD (Calculated) 40kD (Observed)

## Recommended Dilution Ratios

WB:	1:1000-5000
IF:	1:200-1000
ELISA:	1:5000-20000

## Storage

-15°C to -25°C/1 year (Do not lower than -25°C)

## Basic Information

Clonality	Monoclonal
-----------	------------

## Immunogen Information

Specificity	Endogenous
-------------	------------

## Target Information

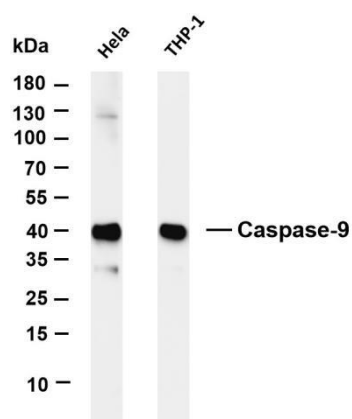
Gene name	CASP9
Protein Name	Caspase9

Organism	Gene ID	UniProt ID
Human	842	P55211
Rat	58918	Q9JHK1

Cellular Localization	Cytoplasm
-----------------------	-----------

Tissue specificity	Ubiquitous, with highest expression in the heart, moderate expression in liver, skeletal muscle, and pancreas. Low levels in all other tissues. Within the heart, specifically expressed in myocytes.
--------------------	---

## Validation Data



Various whole cell lysates were separated by 4-20% SDS-PAGE, and the membrane was blotted with anti-Caspase-9 antibody. The HRP conjugated Goat anti-Rabbit IgG(H + L) antibody was used to detect the antibody.

Lane 1: HeLa

Lane 2: THP-1

Predicted band size: 46kDa

Observed band size: 40kDa

For Research Use Only