

VEGF Receptor 1 Rabbit mAb (AR1106)

Key Features

Host Species:	Rabbit
Reactivity:	Human,Mouse,Rat
Applications:	WB,IHC,IF,IP,ELISA
Isotype:	IgG,Kappa
MW:	151kD (Calculated) 180kD (Observed)

Recommended Dilution Ratios

IHC:	1:200-1000
WB:	1:1000-5000
IF:	1:200-1000
ELISA:	1:5000-20000
IP:	1:50-200

Storage

-15°C to -25°C/1 year (Do not lower than -25°C)

Basic Information

Clonality	Monoclonal
-----------	------------

Immunogen Information

Specificity	Endogenous
-------------	------------

Target Information

Gene name	FLT1 FLT FRT VEGFR1
-----------	---------------------

Protein Name	Vascular endothelial growth factor receptor 1 (VEGFR-1) (Fms-like tyrosine kinase 1) (FLT-1)(Tyrosine-protein kinase FRT) (Tyrosine-protein kinase receptor FLT) (FLT) (Vascular permeability factor receptor)
--------------	--

Organism	Gene ID	UniProt ID
Human	2321	P17948
Mouse	14254	P35969
Rat	54251	P53767

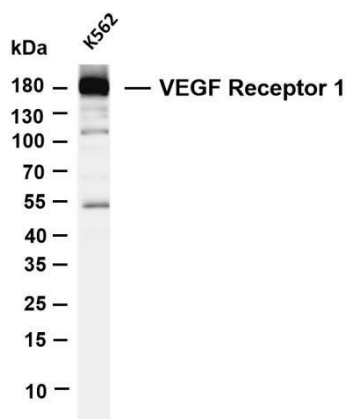
Cellular Localization

Tissue specificity

Membranous

Detected in normal lung, but also in placenta, liver, kidney, heart and brain tissues. Specifically expressed in most of the vascular endothelial cells, and also expressed in peripheral blood monocytes. Isoform 2 is strongly expressed in placenta. Isoform 3 is expressed in corneal epithelial cells (at protein level). Isoform 3 is expressed in vascular smooth muscle cells (VSMC).

Validation Data

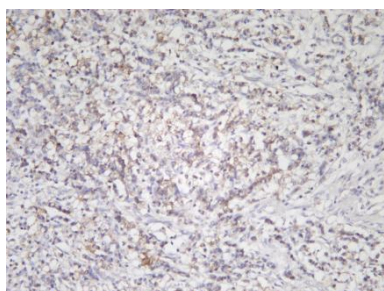


Various whole cell lysates were separated by 4-20% SDS-PAGE, and the membrane was blotted with anti-VEGF Receptor 1 antibody. The HRP-conjugated Goat anti-Rabbit IgG(H + L) antibody was used to detect the antibody.

Lane 1: K562

Predicted band size: 151kDa

Observed band size:180kDa



Human gastric carcinoma was stained with anti-VEGF Receptor 1 rabbit antibody

For Research Use Only