

FOXO3A (Phospho Ser253) Rabbit mAb (AR1107)

Key Features

Host Species:	Rabbit
Reactivity:	Human,Mouse,Rat
Applications:	WB,IHC,IF,IP,ELISA
Isotype:	IgG,Kappa
MW:	71kD (Calculated) 97kD (Observed)

Recommended Dilution Ratios

IHC:	1:200-1000
WB:	1:1000-5000
IF:	1:200-1000
ELISA:	1:5000-20000
IP:	1:50-200

Storage

-15°C to -25°C/1 year (Do not lower than -25°C)

Basic Information

Clonality	Monoclonal
-----------	------------

Immunogen Information

Specificity

This antibody detects endogenous levels of FoxO3A only when phosphorylated at Ser253. This antibody does not recognize phosphorylated at other sites.

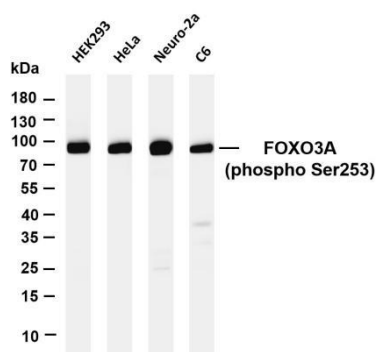
Target Information

Gene name	FOXO3
Protein Name	Forkhead box protein O3

Organism	Gene ID	UniProt ID
Human	2309	O43524
Mouse	56484	Q9WVH4

Cellular Localization	Cytoplasm
Tissue specificity	Ubiquitous.

Validation Data



Various whole cell lysates were separated by 4-20% SDS-PAGE, and the membrane was blotted with anti-FOXO3A antibody. The HRP conjugated Goat anti-Rabbit IgG(H + L) antibody was used to detect the antibody.

Lane 1: HEK293

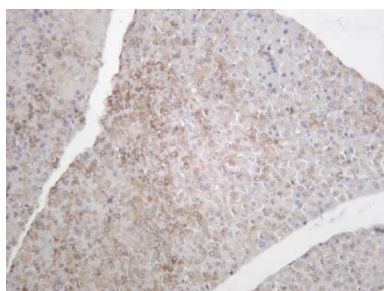
Lane 2: HeLa

Lane 3: Neuro-2a

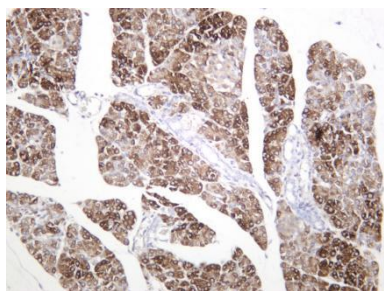
Lane 4: C6

Predicted band size: 71kDa

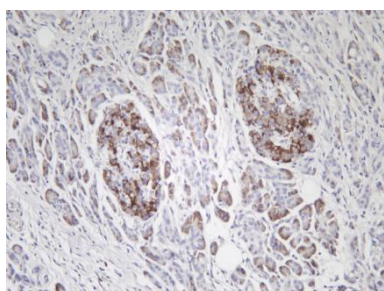
Observed band size: 97kDa



Mouse pancreas was stained with anti-FOXO3A (phospho Ser253) rabbit antibody



Rat pancreas was stained with anti-FOXO3A (phospho Ser253) rabbit antibody



Human pancreas was stained with anti-FOXO3A (phospho Ser253) rabbit antibody

For Research Use Only