

α smooth muscle actin Rabbit mAb (AR1108)

Key Features

Host Species:	Rabbit
Reactivity:	Human,Mouse,Rat
Applications:	WB,IHC,IF,IP,ELISA
Isotype:	IgG,Kappa
MW:	42kD (Calculated) 42kD (Observed)

Recommended Dilution Ratios

IHC:	1:200-1000
WB:	1:1000-5000
IF:	1:200-1000
ELISA:	1:5000-20000
IP:	1:50-200

Storage -15°C to -25°C/1 year (Do not lower than -25°C)

Basic Information

Clonality Monoclonal

Immunogen Information

Specificity Endogenous

Target Information

Gene name ACTA2
Protein Name Actin, aortic smooth muscle

Organism	Gene ID	UniProt ID
Human	59	P62736
Mouse	11475	P62737
Rat	81633	P62738

Cellular Localization Cytoplasm
Tissue specificity Pituitary, Uterus

Validation Data



Various whole cell lysates were separated by 4-20% SDS-PAGE, and the membrane was blotted with anti- α smooth muscle Actin antibody. The HRP-conjugated Goat anti-Rabbit IgG(H + L) antibody was used to detect the antibody.

Lane 1: Hela

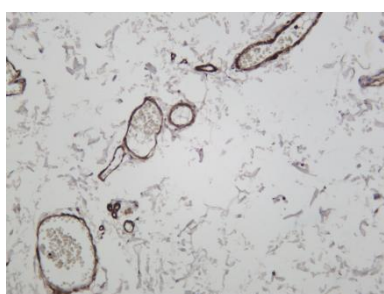
Lane 2: NIH-3T3

Lane 3: Rat lung

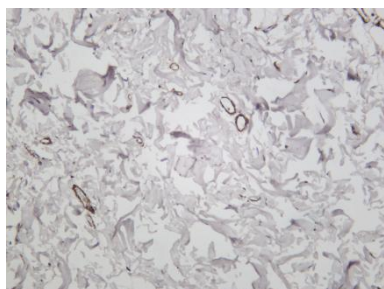
Lane 4: C6

Predicted band size: 42kDa

Observed band size: 42kDa



Human colon was stained with anti- α smooth muscle actin rabbit antibody



Human stomach was stained with anti- α smooth muscle actin rabbit antibody

For Research Use Only