

## Smad2 Rabbit mAb (AR1109)

### Key Features

Host Species:	Rabbit
Reactivity:	Human,Mouse,Rat
Applications:	WB,IF,IP,ELISA
Isotype:	IgG,Kappa
MW:	52kD (Calculated) 58kD (Observed)

### Recommended Dilution Ratios

WB:	1:1000-5000
IF:	1:200-1000
ELISA:	1:5000-20000
IP:	1:50-200

### Storage

-15°C to -25°C/1 year (Do not lower than -25°C)

### Basic Information

Clonality	Monoclonal
-----------	------------

### Immunogen Information

Specificity	Endogenous
-------------	------------

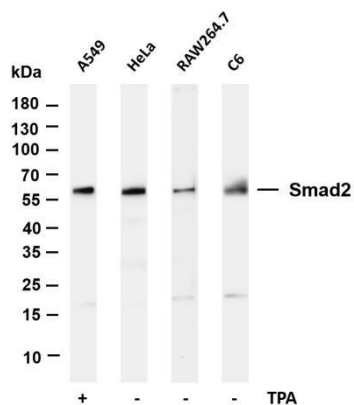
### Target Information

Gene name	SMAD2
Protein Name	Mothers against decapentaplegic homolog 2

Organism	Gene ID	UniProt ID
Human	4087	Q15796
Mouse	17126	Q62432
Rat	29357	O70436

Cellular Localization	Cytoplasm, Nuclear
Tissue specificity	Expressed at high levels in skeletal muscle, endothelial cells, heart and placenta.

## Validation Data



Various whole cell lysates were separated by 4-20% SDS-PAGE, and the membrane was blotted with anti-Smad2 antibody. The HRP conjugated Goat anti-Rabbit IgG(H + L) antibody was used to detect the antibody.

Lane 1: A549 treated with TPA of 48 hours

Lane 2: HeLa

Lane 3: RAW264.7

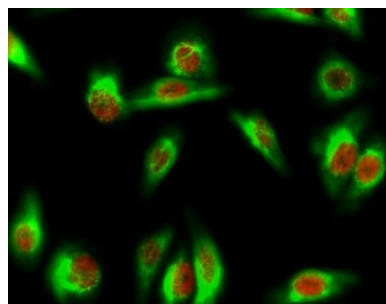
Lane 4: C6

Predicted band size: 52kDa

Observed band size: 58kDa

Immunofluorescence analysis of HeLa cell.

1. Smad2 Antibody(red) was diluted at 1:200(4° overnight). MICU1 Monoclonal Antibody(Mix)(green) was diluted at 1:200(4 ° overnight).
2. Goat Anti Rabbit Alexa Fluor 594 was diluted at 1:1000(room temperature, 50min). Goat Anti Mouse Alexa Fluor 488 was diluted at 1:1000(room temperature, 50min).



For Research Use Only