

ISG15 Rabbit mAb (AR1111)

Key Features

Host Species:	Rabbit
Reactivity:	Human
Applications:	WB,IF,IP,ELISA
Isotype:	IgG,Kappa
MW:	18kD (Calculated) 18kD (Observed)

Recommended Dilution Ratios

WB:	1:500-2000
IF:	1:200-1000
ELISA:	1:5000-20000
IP:	1:50-200

Storage

-15°C to -25°C/1 year (Do not lower than -25°C)

Basic Information

Clonality	Monoclonal
-----------	------------

Immunogen Information

Specificity	Endogenous
-------------	------------

Target Information

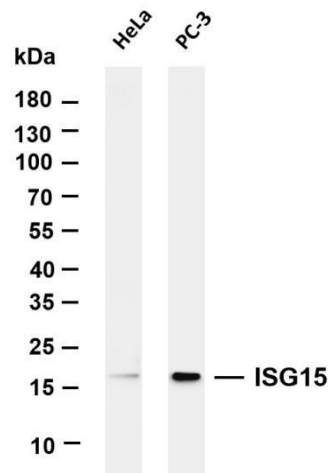
Gene name	ISG15 G1P2 UCRP
Protein Name	ISG15

Organism	Gene ID	UniProt ID
Human	9636	P05161
Mouse		Q64339

Cellular Localization	Cytoplasm Detected in lymphoid cells, striated and smooth muscle, several epithelia and neurons. Expressed in neutrophils, monocytes and lymphocytes. Enhanced expression seen in pancreatic adenocarcinoma, endometrial cancer, and bladder cancer, as compared to noncancerous tissue. In bladder cancer, the increase in
Tissue specificity	

expression exhibits a striking positive correlation with more advanced stages of the disease.

Validation Data



Various whole cell lysates were separated by 4-20% SDS-PAGE, and the membrane was blotted with anti-ISG15 antibody. The HRP conjugated Goat anti-Rabbit IgG(H + L) antibody was used to detect the antibody.

Lane 1: HeLa

Lane 2: PC-3

Predicted band size: 18kDa

Observed band size: 18kDa

For Research Use Only