

LC3A Rabbit mAb (AR1113)

Key Features

Host Species:	Rabbit
Reactivity:	Human,Mouse,Rat
Applications:	WB,IHC,IF,IP,ELISA
Isotype:	IgG,Kappa
MW:	14kD (Calculated) 16kD (Observed)

Recommended Dilution Ratios

IHC:	1:200-1000
WB:	1:1000-5000
IF:	1:200-1000
ELISA:	1:5000-20000
IP:	1:50-200

Storage

-15°C to -25°C/1 year (Do not lower than -25°C)

Basic Information

Clonality	Monoclonal
-----------	------------

Immunogen Information

Specificity	Endogenous
-------------	------------

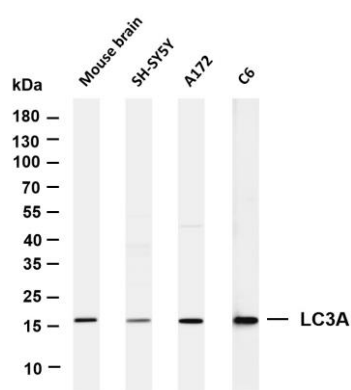
Target Information

Gene name	MAP1LC3A
Protein Name	LC3A

Organism	Gene ID	UniProt ID
Human	84557	Q9H492
Mouse		Q91VR7
Rat		Q6XVN8

Cellular Localization	Cytoplasm
Tissue specificity	Most abundant in heart, brain, liver, skeletal muscle and testis but absent in thymus and peripheral blood leukocytes.

Validation Data



Various whole cell lysates were separated by 4-20% SDS-PAGE, and the membrane was blotted with anti-LC3A antibody. The HRP conjugated Goat anti-Rabbit IgG(H + L) antibody was used to detect the antibody.

Lane 1: Mouse brain

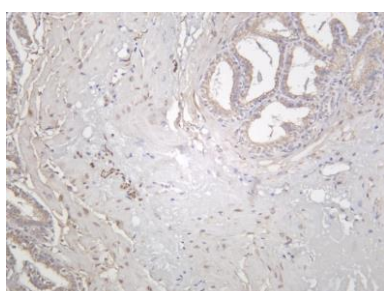
Lane 2: SH-SY5Y

Lane 3: A172

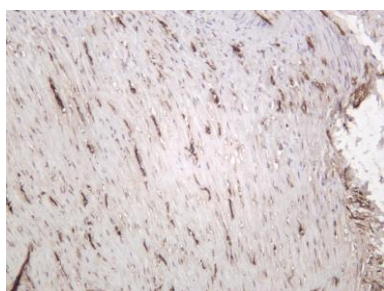
Lane 4: C6

Predicted band size: 14kDa

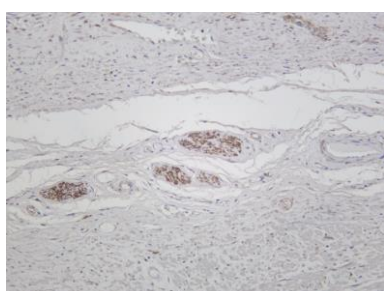
Observed band size: 16kDa



Mouse prostate was stained with anti-LC3A rabbit antibody



Rat colon was stained with anti-LC3A rabbit antibody



Human prostate was stained with anti-LC3A rabbit antibody

For Research Use Only