

MSK1 (Phospho Ser360) Rabbit mAb (AR1114)

Key Features

Host Species:	Rabbit
Reactivity:	Human, Mouse, Rat
Applications:	WB, IF, IP, ELISA
Isotype:	IgG, Kappa
MW:	90 kD (Calculated) 90 kD (Observed)

Recommended Dilution Ratios

WB:	1:1000-5000
IF:	1:200-1000
ELISA:	1:5000-20000
IP:	1:50-200

Storage

-15°C to -25°C/1 year (Do not lower than -25°C)

Basic Information

Clonality	Monoclonal
-----------	------------

Immunogen Information

Specificity	This antibody detects endogenous levels of MSK1 only when phosphorylated at Ser360. This antibody does not recognize phosphorylated at other sites.
-------------	---

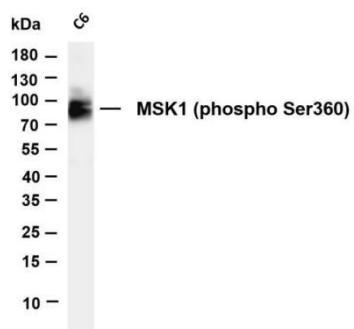
Target Information

Gene name	RPS6KA5
Protein Name	Ribosomal protein S6 kinase alpha-5

Organism	Gene ID	UniProt ID
Human	9252	O75582
Mouse	73086	Q8C050

Cellular Localization	Cytoplasm, Nuclear
Tissue specificity	Widely expressed with high levels in heart, brain and placenta. Less abundant in lung, kidney and liver.

Validation Data



Various whole cell lysates were separated by 4-20% SDS-PAGE, and the membrane was blotted with anti-MSK1 (phospho Ser360) antibody. The HRP-conjugated Goat anti-Rabbit IgG(H + L) antibody was used to detect the antibody.

Lane 1: C6

Predicted band size: 90kDa

Observed band size: 90kDa

For Research Use Only