

PMS2 Rabbit mAb (AR1000)

Key Features

Host Species:	Rabbit
Reactivity:	Human
Applications:	WB,IHC,IF,IP,ELISA
Isotype:	IgG,Kappa
MW:	96 kD (Calculated) 110 kD (Observed)

Recommended Dilution Ratios

IHC:	1:200-1000
WB:	1:500-5000
IF:	1:200-1000
ELISA:	1:5000-20000
IP:	1:50-200

Storage

-15°C to -25°C/1 year (Do not lower than -25°C)

Basic Information

Clonality	Monoclonal
-----------	------------

Immunogen Information

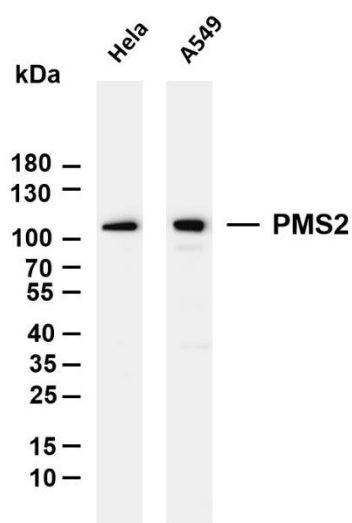
Specificity	Endogenous
-------------	------------

Target Information

Gene name	PMS2 PMSL2
Protein Name	Postmeiotic Segregation Increased 2(PMS2)

	Organism	Gene ID	UniProt ID
	Human	5395	P54278
Cellular Localization	Nuclear		
Tissue specificity	Amygdala, Brain, Endometrial tumor, Epithelium, Human endometrium		

Validation Data



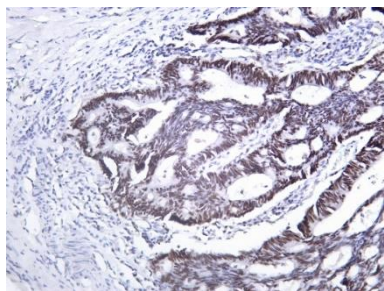
Various whole cell lysates were separated by 4-20% SDS-PAGE, and the membrane was blotted with anti-PMS2 antibody. The HRP conjugated Goat anti-Rabbit IgG(H + L) antibody was used to detect the antibody.

Lane 1: HeLa

Lane 2: A549

Predicted band size: 96kDa

Observed band size: 110kDa



Human rectal carcinoma tissue was stained with Anti-PMS2 rabbit Antibody

For Research Use Only