

MMP9 Rabbit mAb (AR1001)

Key Features

Host Species:	Rabbit
Reactivity:	Mouse,Rat
Applications:	WB,IHC,IF,IP,ELISA
Isotype:	IgG,Kappa
MW:	78 kD (Calculated) 80-92 kD (Observed)

Recommended Dilution Ratios

IHC:	1:200-1000
WB:	1:500-5000
IF:	1:200-1000
ELISA:	1:5000-20000
IP:	1:50-200

Storage

-15°C to -25°C/1 year (Do not lower than -25°C)

Basic Information

Clonality	Monoclonal
-----------	------------

Immunogen Information

Specificity	Endogenous
-------------	------------

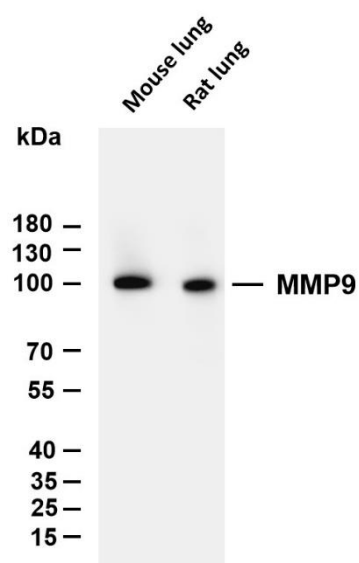
Target Information

Gene name	MMP9 CLG4B
Protein Name	MMP9 (Cleaved-Met94)

Organism	Gene ID	UniProt ID
Human	4318	P14780
Mouse	17395	P41245
Rat	81687	P50282

Cellular Localization	Membranous
Tissue specificity	Detected in neutrophils (at protein level) (PubMed:7683678). Produced by normal alveolar macrophages and granulocytes.

Validation Data



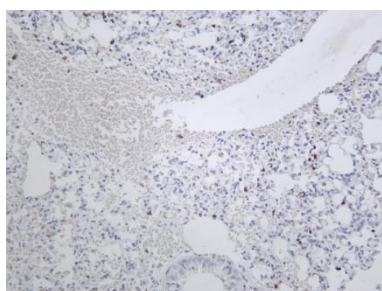
Various whole cell lysates were separated by 10% SDS-PAGE, and the membrane was blotted with anti-MMP9 antibody. The HRP conjugated Goat anti-Rabbit IgG(H + L) antibody was used to detect the antibody.

Lane 1: Mouse lung

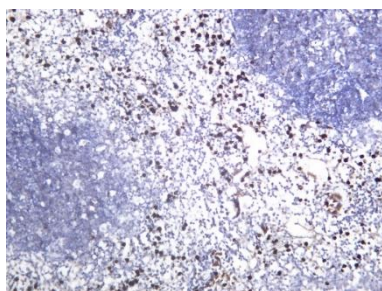
Lane 2: Rat lung

Predicted band size: 78kDa

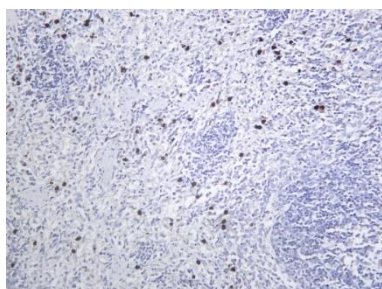
Observed band size: 80-92kDa



Mouse lung tissue was stained with Anti-MMP9 rabbit Antibody



Mouse spleen tissue was stained with Anti-MMP9 rabbit Antibody



Rat spleen tissue was stained with Anti-MMP9 rabbit Antibody

For Research Use Only