

NLRP3 Rabbit mAb (AR1004)

Key Features

Host Species:	Rabbit
Reactivity:	Human, Mouse, Rat
Applications:	WB, IHC, IF, IP, ELISA
Isotype:	IgG, Kappa
MW:	118kD (Calculated) 118kD (Observed)

Recommended Dilution Ratios

IHC:	1:200-1000
WB:	1:500-5000
IF:	1:200-1000
ELISA:	1:5000-20000
IP:	1:50-200

Storage

-15°C to -25°C/1 year (Do not lower than -25°C)

Basic Information

Clonality	Monoclonal
-----------	------------

Immunogen Information

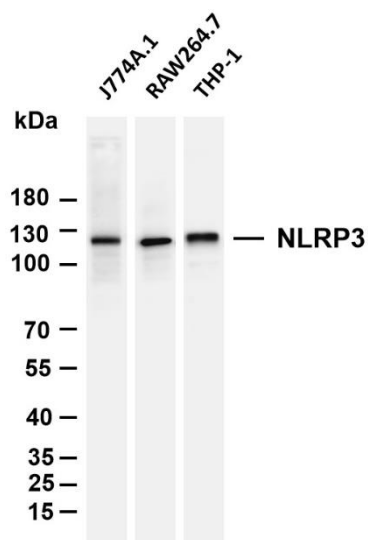
Specificity	Endogenous
-------------	------------

Target Information

Gene name	NLRP3
Protein Name	NACHT LRR and PYD domains-containing protein 3

	Organism	Gene ID	UniProt ID
	Human	114548	Q96P20
	Mouse		Q8R4B8
Cellular Localization	Cytoplasm, Nuclear		

Validation Data



Various whole cell lysates were separated by 4-20% SDS-PAGE, and the membrane was blotted with anti-NLRP3 antibody. The HRP conjugated Goat anti-Rabbit IgG(H + L) antibody was used to detect the antibody.

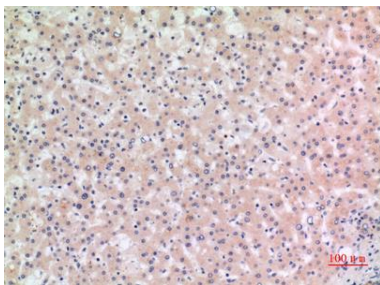
Lane 1: J774A.1

Lane 2: RAW364.7

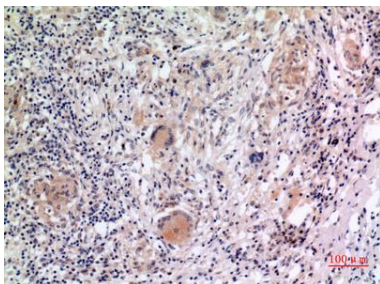
Lane 3: THP-1

Predicted band size: 118kDa

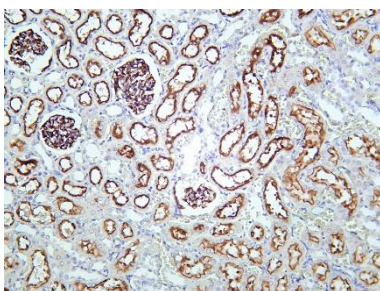
Observed band size: 118kDa



Immunohistochemical analysis of paraffin-embedded human-liver, antibody was diluted at 1:100



Immunohistochemical analysis of paraffin-embedded human-lung, antibody was diluted at 1:100



Rat kidney tissue was stained with Anti-NLRP3 rabbit Antibody

For Research Use Only