

SQSTM1/p62 Rabbit mAb (AR1005)

Key Features

Host Species:	Rabbit
Reactivity:	Human, Mouse, Rat
Applications:	WB, IHC, IF, IP, ELISA
Isotype:	IgG, Kappa
MW:	48kD (Calculated) 62kD (Observed)

Recommended Dilution Ratios

IHC:	1:200-1000
WB:	1:500-5000
IF:	1:200-1000
ELISA:	1:5000-20000
IP:	1:50-200

Storage

-15°C to -25°C/1 year (Do not lower than -25°C)

Basic Information

Clonality	Monoclonal
-----------	------------

Immunogen Information

Specificity	Endogenous
-------------	------------

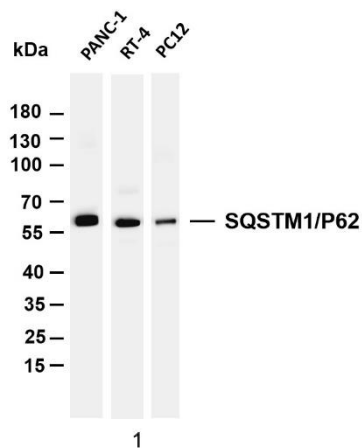
Target Information

Gene name	SQSTM1 ORCA OSIL
Protein Name	SQSTM

Organism	Gene ID	UniProt ID
Human	8878	Q13501
Mouse	18412	Q64337
Rat	113894	Q08623

Cellular Localization	Cytoplasm, Nuclear
-----------------------	--------------------

Validation Data



Various whole cell lysates were separated by 4-20% SDS-PAGE, and the membrane was blotted with anti-SQSTM1/P62 antibody. The HRP conjugated Goat anti-Rabbit IgG(H + L) antibody was used to detect the antibody.

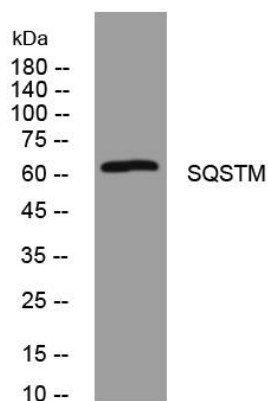
Lane 1: PANC-1

Lane 2: RT-4

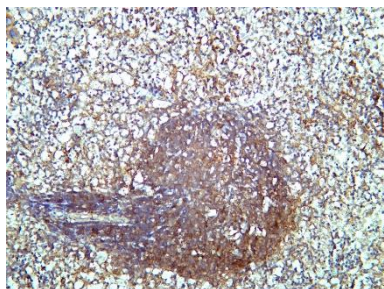
Lane 3: PC12

Predicted band size: 48kDa

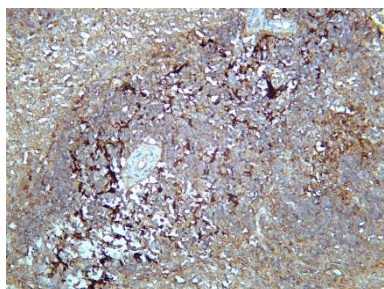
Observed band size: 62kDa



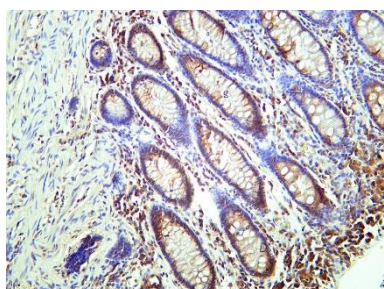
Western blot analysis of lysates from AD293 cells, primary antibody was diluted at 1:1000, 4° overnight.



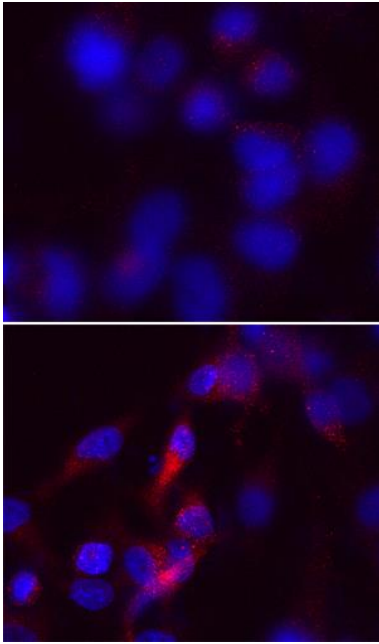
Mouse spleen tissue was stained with Anti-SQSTM1/p62 rabbit Antibody



Rat spleen tissue was stained with Anti-SQSTM1/p62 rabbit Antibody



Human colon carcinoma tissue was stained with Anti-SQSTM1/p62 rabbit Antibody



Immunofluorescence analysis of HeLa cells treated or un-treated with UV 30min.

1. primary antibody(red) was diluted at 1:200(4°C, overnight).
2. AF594 labeled Secondary antibody was diluted at 1:300(room temperature, 50min).

For Research Use Only