

CD86 Rabbit mAb (AR1003)

Key Features

Host Species:	Rabbit
Reactivity:	Mouse
Applications:	WB,IHC,IF,IP,ELISA
Isotype:	IgG,Kappa
MW:	37kD (Calculated) 60-80kD (Observed)

Recommended Dilution Ratios

IHC:	1:200-1000
WB:	1:500-5000
IF:	1:200-1000
ELISA:	1:5000-20000
IP:	1:50-200

Storage

-15°C to -25°C/1 year (Do not lower than -25°C)

Basic Information

Clonality	Monoclonal
-----------	------------

Immunogen Information

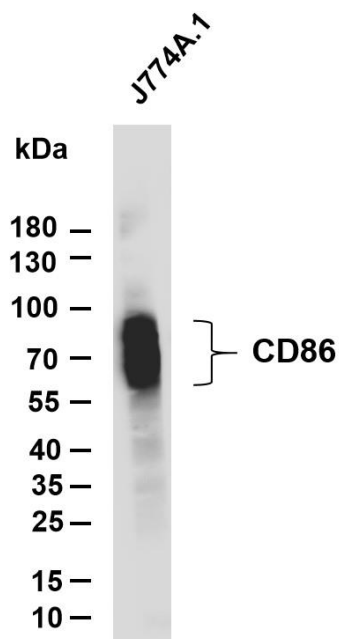
Specificity	Endogenous
-------------	------------

Target Information

Gene name	CD86 CD28LG2
Protein Name	CD86

	Organism	Gene ID	UniProt ID
	Human	942	P42081
	Mouse	12524	P42082
Cellular Localization	Membranous		

Validation Data

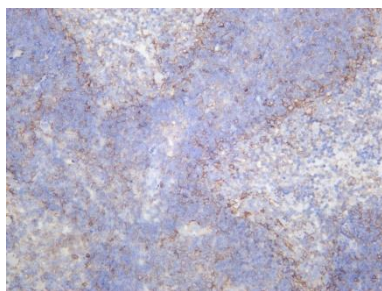


Various whole cell lysates were separated by 4-20% SDS-PAGE, and the membrane was blotted with anti-CD86 antibody. The HRP conjugated Goat anti-Rabbit IgG(H + L) antibody was used to detect the antibody.

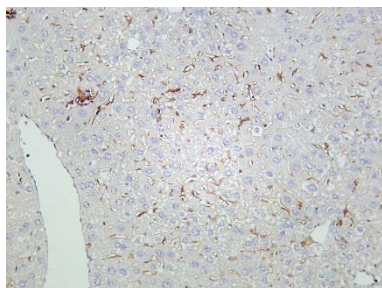
Lane 1: J774A.1

Predicted band size: 37kDa

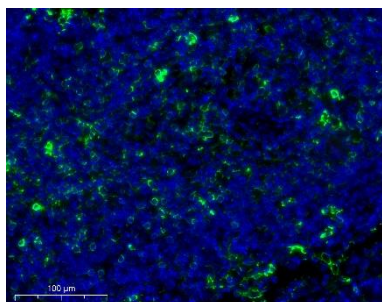
Observed band size: 60-85kDa



Mouse spleen was stained with anti-CD86 rabbit antibody



Mouse liver tissue was stained with Anti-CD86 rabbit Antibody



Immunofluorescence analysis of paraffin-embedded Mouse spleen. Primary Antibody was diluted at 1:200(4° overnight). an Multi colour-Fluorescence kit. EDTA based antigen retrieval was used before Green tyramide signal amplification. DAPI (dark blue) was used as a nuclear counter stain. Microscopy and pseudocoloring of individual dyes were performed using a Slideviewer Imaging System (3D histech).