

MTCO2 Rabbit mAb (AR1007)

Key Features

Host Species:	Rabbit
Reactivity:	Human
Applications:	WB,IHC,IF,IP,ELISA
Isotype:	IgG,Kappa
MW:	26kD (Calculated) 21kD (Observed)

Recommended Dilution Ratios

IHC:	1:200-1000
WB:	1:1000-5000
IF:	1:200-1000
ELISA:	1:5000-20000
IP:	1:50-200

Storage

-15°C to -25°C/1 year (Do not lower than -25°C)

Basic Information

Clonality	Monoclonal
-----------	------------

Immunogen Information

Specificity	Endogenous
-------------	------------

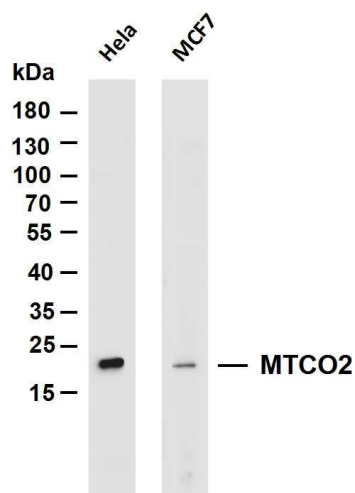
Target Information

Gene name	MT-CO2 COII COXII MTCO2
Protein Name	Cytochrome c oxidase subunit 2 (Cytochrome c oxidase polypeptide II)

Organism	Gene ID	UniProt ID
Human	4513	P00403
Mouse		P00405
Rat		P00406

Cellular Localization	Cytoplasmic
Tissue specificity	Blood, Bone fossil, Bones, Breast cancer, Distant normal tissue, Endometrial adenocarcinoma.

Validation Data



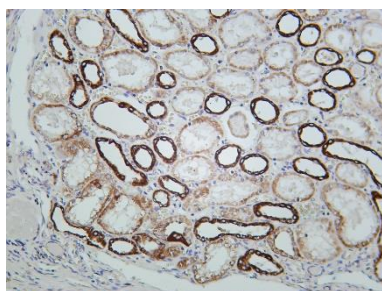
Various whole cell lysates were separated by 4-20% SDS-PAGE, and the membrane was blotted with anti-MTCO2 antibody. The HRP conjugated Goat anti-Rabbit IgG(H + L) antibody was used to detect the antibody.

Lane 1: HeLa

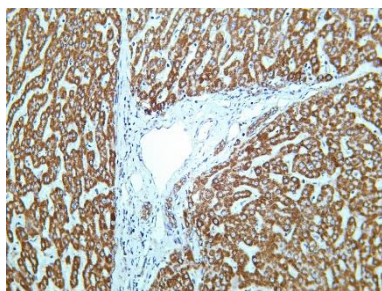
Lane 2: MCF7

Predicted band size: 26kDa

Observed band size: 21kDa



Human kidney was stained with Anti-MTCO2 rabbit antibody



Human liver was stained with Anti-MTCO2 rabbit antibody

For Research Use Only