

PI3-Kinase p85 α Rabbit mAb (AR1008)

Key Features

Host Species:	Rabbit
Reactivity:	Human, Mouse, Rat
Applications:	WB, IHC, IF, IP, ELISA
Isotype:	IgG, Kappa
MW:	84kD (Calculated) 84kD (Observed)

Recommended Dilution Ratios

IHC:	1:200-1000
WB:	1:1000-5000
IF:	1:200-1000
ELISA:	1:5000-20000
IP:	1:50-200

Storage

-15°C to -25°C/1 year (Do not lower than -25°C)

Basic Information

Clonality	Monoclonal
-----------	------------

Immunogen Information

Specificity	Endogenous
-------------	------------

Target Information

Gene name	PIK3R1
Protein Name	Phosphatidylinositol 3-kinase regulatory subunit alpha (PI3-kinase regulatory subunit alpha) (PI3K regulatory subunit alpha) (PtdIns-3-kinase regulatory subunit alpha) (Phosphatidylinositol 3-kinase 85 kDa regulatory subunit alpha) (PI3-kinase subunit p85)

Organism	Gene ID	UniProt ID
Human	5295	P27986
Mouse		P26450
Rat		Q63787

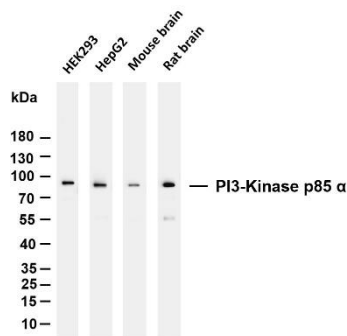
Cellular Localization	nucleus, cytoplasm, cis-Golgi network, cytosol, plasma membrane,
-----------------------	--

cell-cell junction, phosphatidylinositol 3-kinase complex, phosphatidylinositol 3-kinase complex, class IA, membrane, perinuclear endoplasmic reticulum membrane

Isoform 2 is expressed in skeletal muscle and brain, and at lower levels in kidney and cardiac muscle. Isoform 2 and isoform 4 are present in skeletal muscle (at protein level)

Tissue specificity

Validation Data



Various whole cell lysates were separated by 4-20% SDS-PAGE, and the membrane was blotted with anti-PI3-Kinase p85 α antibody. The HRP-conjugated Goat anti-Rabbit IgG(H + L) antibody was used to detect the antibody.

Lane 1: HEK293

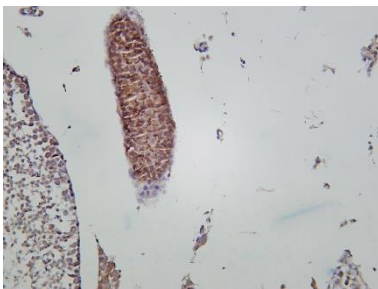
Lane 2: HepG2

Lane 3: Mouse brain

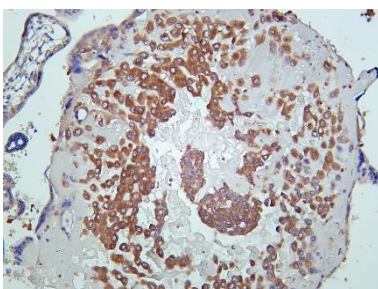
Lane 4: Rat brain

Predicted band size: 84kDa

Observed band size: 84kDa



Mouse testis was stained with Anti-PI3-Kinase p85 α rabbit Antibody



Human placenta was stained with Anti-PI3-Kinase p85 α rabbit Antibody

For Research Use Only