

## RhoA Rabbit mAb (AR1009)

### Key Features

Host Species:	Rabbit
Reactivity:	Human, Mouse, Rat
Applications:	WB, IHC, IF, IP, ELISA
Isotype:	IgG, Kappa
MW:	22kD (Calculated) 22kD (Observed)

### Recommended Dilution Ratios

IHC:	1:200-1000
WB:	1:1000-5000
IF:	1:200-1000
ELISA:	1:5000-20000
IP:	1:50-200

### Storage

-15°C to -25°C/1 year (Do not lower than -25°C)

### Basic Information

Clonality	Monoclonal
-----------	------------

### Immunogen Information

Specificity	Endogenous
-------------	------------

### Target Information

Gene name	RHOA ARH12 ARHA RHO12
-----------	-----------------------

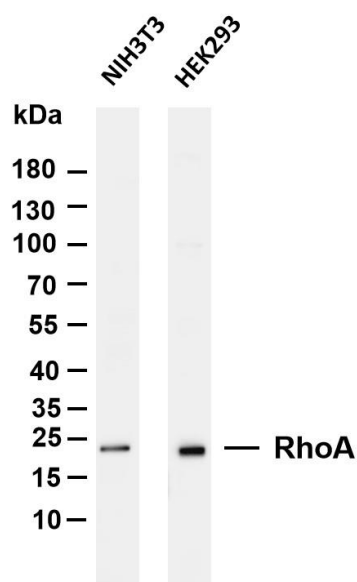
Protein Name	Rho A
--------------	-------

Organism	Gene ID	UniProt ID
Human	387	P61586
Mouse	11848	Q9QUI0
Rat	117273	P61589

Cellular Localization	Cell membrane; Lipid-anchor; Cytoplasmic side. Cytoplasm, cytoskeleton. Cleavage furrow. Cytoplasm, cell cortex. Midbody. Cell projection, lamellipodium. Cell projection, dendrite. Nucleus. Localized to cell-cell contacts in calcium-treated keratinocytes (By
-----------------------	--

Tissue specificity

## Validation Data



similarity). Translocates to the equatorial region before furrow formation in a ECT2-dependent manner. Localizes to the equatorial cell cortex (at the site of the presumptive furrow) in early anaphase in an activated form and in a myosin and actin-independent manner. Adipose tissue, Brain, Colon, Mammary cancer, Oesophageal carcinoma, Placenta

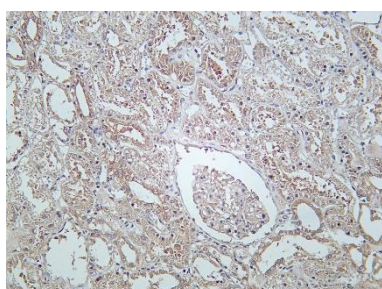
Various whole cell lysates were separated by 4-20% SDS-PAGE, and the membrane was blotted with anti-RhoA antibody. The HRP conjugated Goat anti-Rabbit IgG(H + L) antibody was used to detect the antibody.

Lane 1: NIH3T3

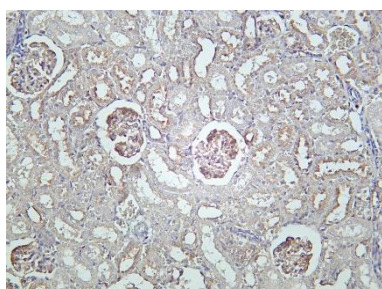
Lane 2: HEK293

Predicted band size: 22kDa

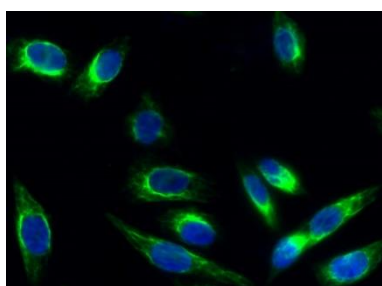
Observed band size: 22kDa



Human kidney was stained with Anti-RhoA rabbit Antibody



Rat kidney was stained with Anti-RhoA rabbit Antibody



Immunofluorescence analysis of HeLa cell.

1. RhoA rabbit mAb (green) was diluted at 1:200(4° overnight).
2. Goat Anti Rabbit Alexa Fluor 488 was diluted at 1:1000(room temperature, 50min).
3. DAPI (blue) 10min.