

Hsp90 Rabbit mAb (AR1006)

Key Features

Host Species:	Rabbit
Reactivity:	Human, Mouse, Rat
Applications:	WB, IHC, IF, IP, ELISA
Isotype:	IgG, Kappa
MW:	83kD (Calculated) 83kD (Observed)

Recommended Dilution Ratios

IHC:	1:200-1000
WB:	1:1000-5000
IF:	1:200-1000
ELISA:	1:5000-20000
IP:	1:50-200

Storage

-15°C to -25°C/1 year (Do not lower than -25°C)

Basic Information

Clonality	Monoclonal
-----------	------------

Immunogen Information

Specificity	Endogenous
-------------	------------

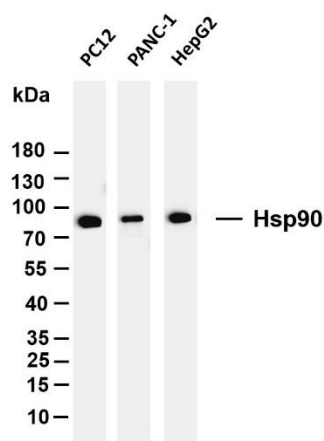
Target Information

Gene name	HSP90AB1
Protein Name	Heat shock protein HSP 90-beta

Organism	Gene ID	UniProt ID
Human	3326	P08238
Mouse	15516	P11499
Rat	301252	P34058

Cellular Localization	Cytoplasm, Nuclear
Tissue specificity	Amygdala, Brain cortex, Colon, Colon carcinoma, Embryon

Validation Data



Various whole cell lysates were separated by 4-20% SDS-PAGE, and the membrane was blotted with anti-Hsp90 antibody. The HRP conjugated Goat anti-Rabbit IgG(H + L) antibody was used to detect the antibody.

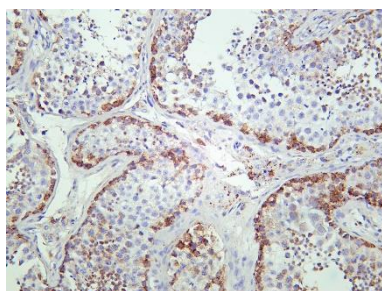
Lane 1: PC12

Lane 2: PANC-1

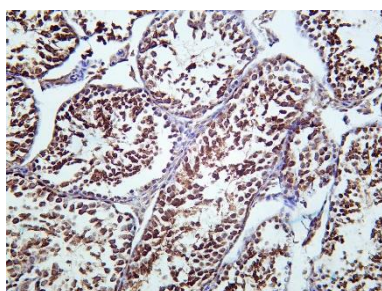
Lane 3: HepG2

Predicted band size: 83kDa

Observed band size: 83kDa



Human tonsil testis was stained with Anti-HSP90 rabbit Antibody



Mouse testis was stained with Anti-HSP90 rabbit Antibody

For Research Use Only