

CD19 Rabbit mAb (AR1010)

Key Features

| | |
|---------------|---------------------------------------|
| Host Species: | Rabbit |
| Reactivity: | Human |
| Applications: | WB,IHC,IF,IP,ELISA |
| Isotype: | IgG,Kappa |
| MW: | 61kD (Calculated) 110kD (Observed) |

Recommended Dilution Ratios

| | |
|--------|--------------|
| IHC: | 1:200-1000 |
| WB: | 1:1000-5000 |
| IF: | 1:200-1000 |
| ELISA: | 1:5000-20000 |
| IP: | 1:50-200 |

Storage

-15°C to -25°C/1 year (Do not lower than -25°C)

Basic Information

| | |
|-----------|------------|
| Clonality | Monoclonal |
|-----------|------------|

Immunogen Information

| | |
|-------------|------------|
| Specificity | Endogenous |
|-------------|------------|

Target Information

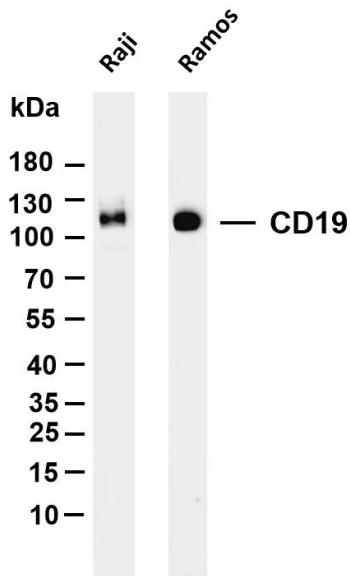
| | |
|--------------|--|
| Gene name | CD19 |
| Protein Name | B-lymphocyte antigen CD19 (B-lymphocyte surface antigen B4) (Differentiation antigen CD19) (T-cell surface antigen Leu-12) (CD antigen CD19) |

| Organism | Gene ID | UniProt ID |
|----------|---------|------------|
| Human | 930 | P15391 |
| Mouse | 12478 | P25918 |

| | |
|-----------------------|--|
| Cellular Localization | Membranous |
| Tissue specificity | Detected on marginal zone and germinal center B cells in lymph nodes (PubMed:2463100). Detected on blood B cells (at protein |

level) (PubMed:2463100, PubMed:16672701).

Validation Data



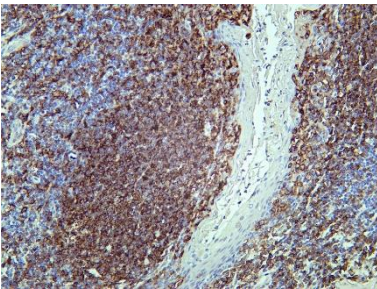
Various whole cell lysates were separated by 4-20% SDS-PAGE, and the membrane was blotted with anti-CD19 antibody. The HRP conjugated Goat anti-Rabbit IgG(H + L) antibody was used to detect the antibody.

Lane 1: Raji

Lane 2: Ramos

Predicted band size: 61kDa

Observed band size: 110kDa



Human tonsil tissue was stained with Anti-CD19 rabbit Antibody

For Research Use Only