

## ALIX Rabbit mAb (AR1012)

### Key Features

Host Species:	Rabbit
Reactivity:	Human, Mouse, Rat
Applications:	WB, IHC, IF, IP, ELISA
Isotype:	IgG, Kappa
MW:	96kD (Calculated) 96kD (Observed)

### Recommended Dilution Ratios

IHC:	1:200-1000
WB:	1:1000-5000
IF:	1:200-1000
ELISA:	1:5000-20000
IP:	1:50-200

### Storage

-15°C to -25°C/1 year (Do not lower than -25°C)

### Basic Information

Clonality	Monoclonal
-----------	------------

### Immunogen Information

Specificity	Endogenous
-------------	------------

### Target Information

Gene name	PDCD6IP AIP1 ALIX KIAA1375
-----------	----------------------------

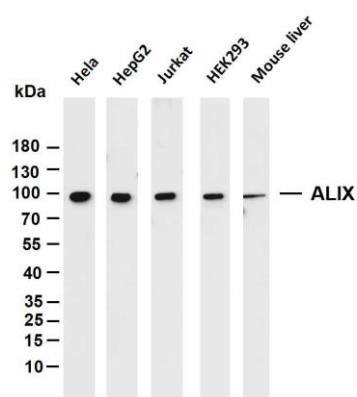
Protein Name	Alix
--------------	------

Organism	Gene ID	UniProt ID
Human	10015	Q8WUM4

Cellular Localization	Cytoplasmic
-----------------------	-------------

Tissue specificity	Brain, Lymph, Osteosarcoma, Placenta, Testis
--------------------	--

## Validation Data



Various whole cell lysates were separated by 4-20% SDS-PAGE, and the membrane was blotted with anti-ALIX antibody. The HRP conjugated Goat anti-Rabbit IgG(H + L) antibody was used to detect the antibody.

Lane 1: HeLa

Lane 2: HepG2

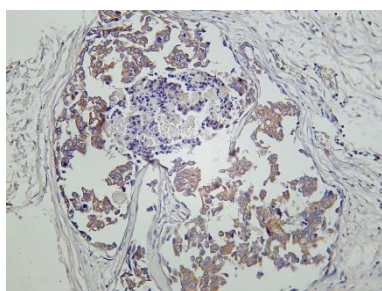
Lane 3: Jurkat

Lane 4: HEK293

Lane 5: Mouse liver

Predicted band size: 96kDa

Observed band size: 96kDa



Human breast carcinoma was stained with Anti-ALIX rabbit antibody

For Research Use Only