

IGF1 Receptor Rabbit mAb (AR1015)

Key Features

Host Species:	Rabbit
Reactivity:	Human
Applications:	WB,IHC,IF,IP,ELISA
Isotype:	IgG,Kappa
MW:	154kD (Calculated) 200kD (Observed)

Recommended Dilution Ratios

IHC:	1:100-200
WB:	1:1000-5000
IF:	1:200-1000
ELISA:	1:5000-20000
IP:	1:50-200

Storage

-15°C to -25°C/1 year (Do not lower than -25°C)

Basic Information

Clonality	Monoclonal
-----------	------------

Immunogen Information

Specificity	Endogenous
-------------	------------

Target Information

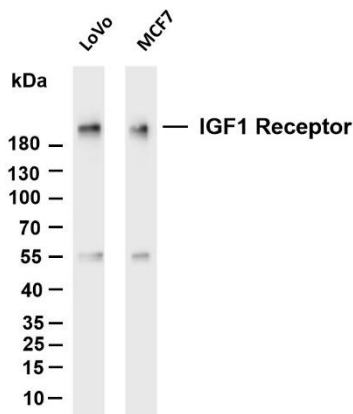
Gene name	IGF1R
Protein Name	Insulin-like growth factor 1 receptor

Organism	Gene ID	UniProt ID
Human	3480	P08069
Mouse	16001	Q60751
Rat	25718	P24062

Cellular Localization	Membranous
Tissue specificity	Found as a hybrid receptor with INSR in muscle, heart, kidney, adipose tissue, skeletal muscle, hepatoma, fibroblasts, spleen and

placenta (at protein level). Expressed in a variety of tissues. Overexpressed in tumors, including melanomas, cancers of the colon, pancreas prostate and kidney.

Validation Data



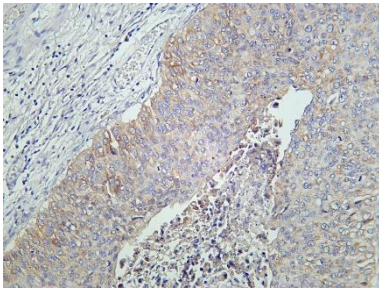
Various whole cell lysates were separated by 4-20% SDS-PAGE, and the membrane was blotted with anti-IGF1 Receptor antibody. The HRP-conjugated Goat anti-Rabbit IgG(H + L) antibody was used to detect the antibody.

Lane 1: LoVo

Lane 2: MCF7

Predicted band size: 154kDa

Observed band size: 200kDa



Human bladder carcinoma was stained with Anti-IGF1 Receptor rabbit antibody

For Research Use Only