

# FXR1 Rabbit mAb (AR1016)

## Key Features

Host Species:	Rabbit
Reactivity:	Human,Mouse,Rat
Applications:	WB,IHC,IF,IP,ELISA
Isotype:	IgG,Kappa
MW:	70kD (Calculated) 70-84kD (Observed)

## Recommended Dilution Ratios

IHC:	1:200-1000
WB:	1:1000-5000
IF:	1:200-1000
ELISA:	1:5000-20000
IP:	1:50-200

## Storage

-15°C to -25°C/1 year (Do not lower than -25°C)

## Basic Information

Clonality	Monoclonal
-----------	------------

## Immunogen Information

Specificity	Endogenous
-------------	------------

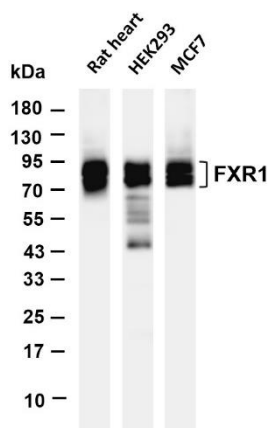
## Target Information

Gene name	FXR1
Protein Name	fxr1

Organism	Gene ID	UniProt ID
Human	8087	P51114
Mouse	14359	Q61584
Rat	361927	Q5XI81

Cellular Localization	Cytoplasm
Tissue specificity	Expressed in all tissues examined including heart, brain, kidney and testis.

## Validation Data



Various whole cell lysates were separated by 4-20% SDS-PAGE, and the membrane was blotted with anti-FXR1 antibody. The HRP conjugated Goat anti-Rabbit IgG(H + L) antibody was used to detect the antibody.

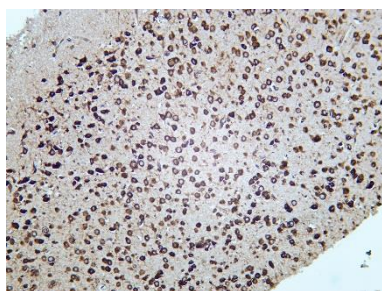
Lane 1: Rat heart

Lane 2: HEK293

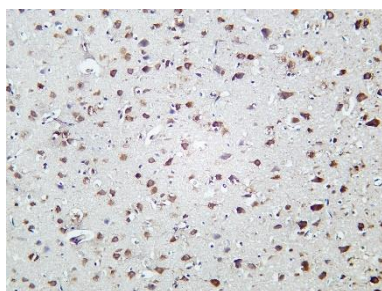
Lane 3: MCF7

Predicted band size: 70kDa

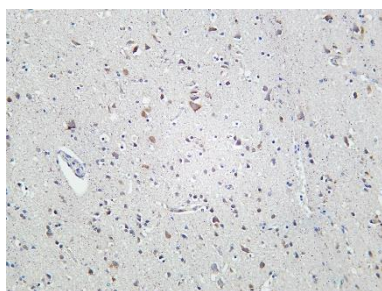
Observed band size: 70-84kDa



Mouse brain was stained with Anti-FXR1 rabbit antibody



Rat brain was stained with Anti-FXR1 rabbit antibody



Human brain was stained with Anti-FXR1 rabbit antibody

For Research Use Only