

IL18 Rabbit mAb (AR1017)

Key Features

Host Species:	Rabbit
Reactivity:	Human
Applications:	WB,IHC,IF,IP,ELISA
Isotype:	IgG,Kappa
MW:	22kD (Calculated) 22kD (Observed)

Recommended Dilution Ratios

IHC:	1:200-1000
WB:	1:1000-5000
IF:	1:200-1000
ELISA:	1:5000-20000
IP:	1:50-200

Storage

-15°C to -25°C/1 year (Do not lower than -25°C)

Basic Information

Clonality	Monoclonal
-----------	------------

Immunogen Information

Specificity	Endogenous
-------------	------------

Target Information

Gene name	IL18 IGIF IL1F4
Protein Name	Interleukin-18 (IL-18) (Iboctadekin) (Interferon gamma-inducing factor) (IFN-gamma inducing factor) (Interleukin-1 gamma) (IL-1 gamma)

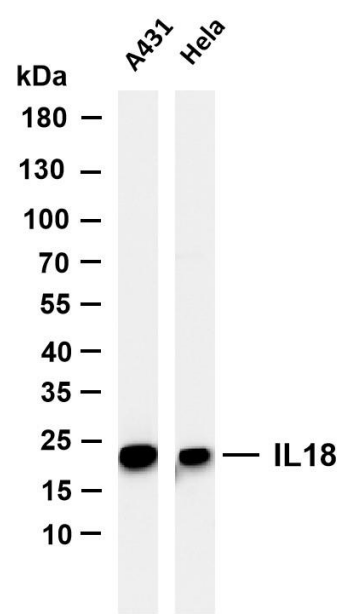
	Organism	Gene ID	UniProt ID
	Human	3606	Q14116
	Mouse		P70380
	Rat		P97636

Cellular Localization	Cytoplasm
-----------------------	-----------

Tissue specificity

Liver, Peripheral blood, Urinary bladder

Validation Data



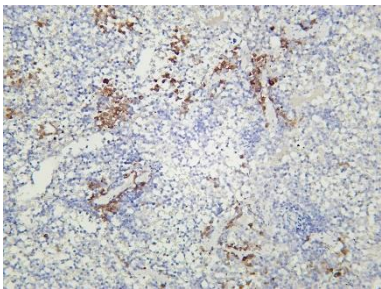
Various whole cell lysates were separated by 4-20% SDS-PAGE, and the membrane was blotted with anti-IL18 antibody. The HRP conjugated Goat anti-Rabbit IgG(H + L) antibody was used to detect the antibody.

Lane 1: A431

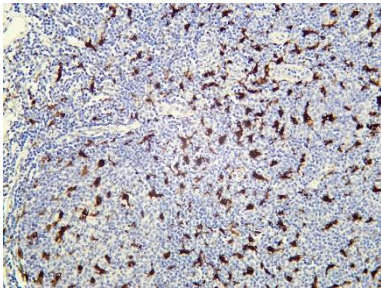
Lane 2: HeLa

Predicted band size: 22kDa

Observed band size: 22kDa



Mouse spleen was stained with Anti-IL18 rabbit antibody



Human tonsil was stained with Anti-IL18 rabbit antibody

For Research Use Only