

## SDHA Rabbit mAb (AR1019)

### Key Features

Host Species:	Rabbit
Reactivity:	Human, Mouse, Rat
Applications:	WB, IHC, IF, IP, ELISA
Isotype:	IgG, Kappa
MW:	73kD (Calculated) 73kD (Observed)

### Recommended Dilution Ratios

IHC:	1:200-1000
WB:	1:1000-5000
IF:	1:200-1000
ELISA:	1:5000-20000
IP:	1:50-200

### Storage

-15°C to -25°C/1 year (Do not lower than -25°C)

### Basic Information

Clonality	Monoclonal
-----------	------------

### Immunogen Information

Specificity	Endogenous
-------------	------------

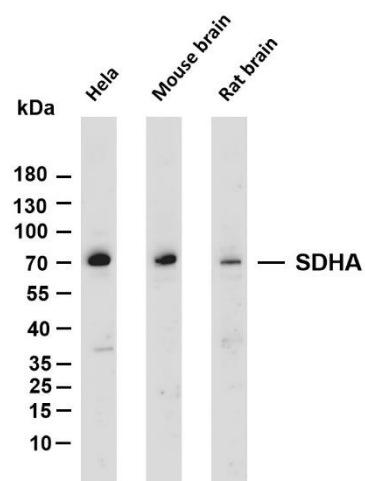
### Target Information

Gene name	SDHA
Protein Name	Succinate dehydrogenase [ubiquinone] flavoprotein subunit mitochondrial

Organism	Gene ID	UniProt ID
Human	6389	P31040
Mouse	66945	Q8K2B3
Rat	157074	Q920L2

Cellular Localization	Cytoplasmic
Tissue specificity	Adipocyte, Brain, Colon, Heart, Liver, Placenta

## Validation Data



Various whole cell lysates were separated by 4-20% SDS-PAGE, and the membrane was blotted with anti-SDHA antibody. The HRP conjugated Goat anti-Rabbit IgG(H + L) antibody was used to detect the antibody.

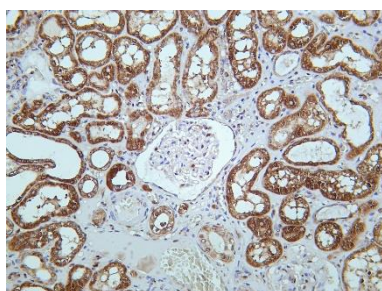
Lane 1: HeLa

Lane 2: Mouse brain

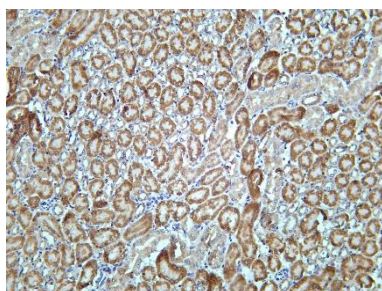
Lane 3: Rat brain

Predicted band size: 73kDa

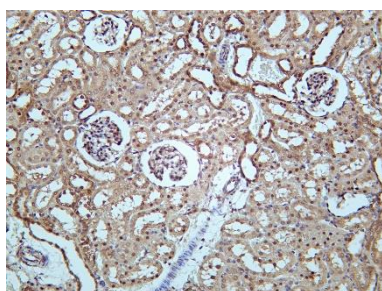
Observed band size: 73kDa



Human kidney was stained with Anti-SDHA rabbit antibody



Mouse kidney was stained with Anti-SDHA rabbit antibody



Rat kidney was stained with Anti-SDHA rabbit antibody

For Research Use Only