

Histone H4 Rabbit mAb (AR1020)

Key Features

Host Species:	Rabbit
Reactivity:	Human,Mouse,Rat
Applications:	WB,IHC,IF,IP,ELISA
Isotype:	IgG,Kappa
MW:	11kD (Calculated) 11kD (Observed)

Recommended Dilution Ratios

IHC:	1:200-1000
WB:	1:1000-5000
IF:	1:200-1000
ELISA:	1:5000-20000
IP:	1:50-200

Storage

-15°C to -25°C/1 year (Do not lower than -25°C)

Basic Information

Clonality	Monoclonal
-----------	------------

Immunogen Information

Specificity	Endogenous
-------------	------------

Target Information

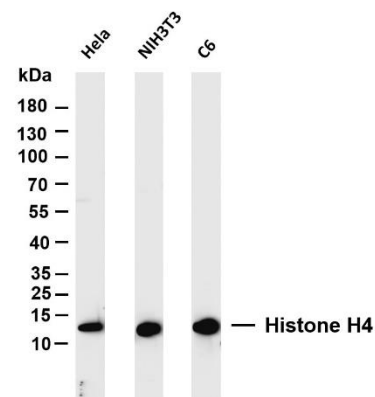
Gene name	H4C1; H4C2; H4C3; H4C4; H4C5; H4C6; H4C8; H4C9; H4C11; H4C12; H4C13; H4C14; H4C15; H4C16
Protein Name	Histone H4

Organism	Gene ID	UniProt ID
Human	121504; 554313; 8294;	P62805
	8359; 8360; 8361; 8362;	
	8363; 8364; 8365; 8366;	
	8367; 8368; 8370	
Mouse	100041230	P62806
Rat	100360950	P62804

Cellular Localization

Tissue specificity

Validation Data



Nucleus. Chromosome.

B-cell lymphoma, Bone marrow, Brain, Clones donated by HIP, Corpus call

Various whole cell lysates were separated by 4-20% SDS-PAGE, and the membrane was blotted with anti-Histone H4 antibody. The HRP conjugated Goat anti-Rabbit IgG(H + L) antibody was used to detect the antibody.

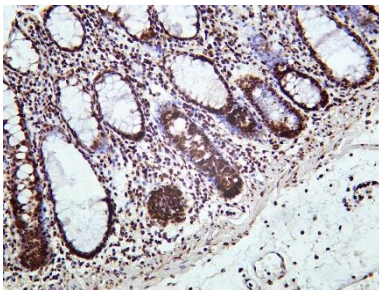
Lane 1: HeLa

Lane 2: NIH3T3

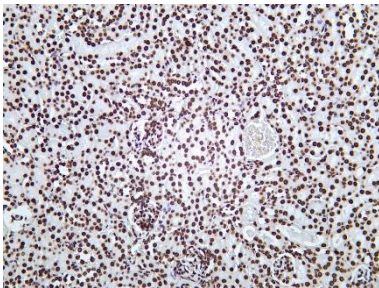
Lane 3: C6

Predicted band size: 11kDa

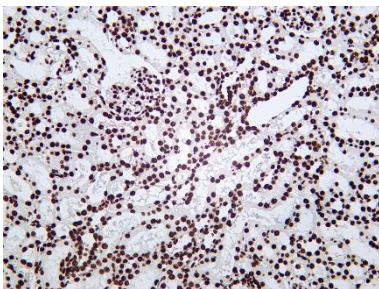
Observed band size: 11kDa



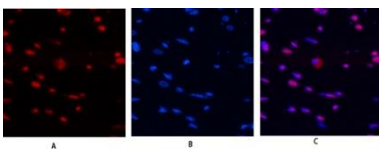
Human colon was stained with Anti-Histone H4 rabbit antibody



Mouse kidney was stained with Anti-Histone H4 rabbit antibody



Rat kidney was stained with Anti-Histone H4 rabbit antibody



Immunofluorescence analysis of rat-heart tissue.

1. Histone H4 Polyclonal Antibody(red) was diluted at 1:200(4° overnight).
2. Cy3 labeled Secondary antibody was diluted at 1:300(room temperature, 50min).
3. DAPI (blue) 10min.

Picture A: Target. Picture B: DAPI (blue). Picture C: merge of A+B

For Research Use Only