

## TBR1 Rabbit mAb (AR1021)

### Key Features

Host Species:	Rabbit
Reactivity:	Human,Mouse,Rat
Applications:	WB,IHC,IF,IP,ELISA
Isotype:	IgG,Kappa
MW:	74kD (Calculated) 74kD (Observed)

### Recommended Dilution Ratios

IHC:	1:200-1000
WB:	1:1000-5000
IF:	1:200-1000
ELISA:	1:5000-20000
IP:	1:50-200

### Storage

-15°C to -25°C/1 year (Do not lower than -25°C)

### Basic Information

Clonality	Monoclonal
-----------	------------

### Immunogen Information

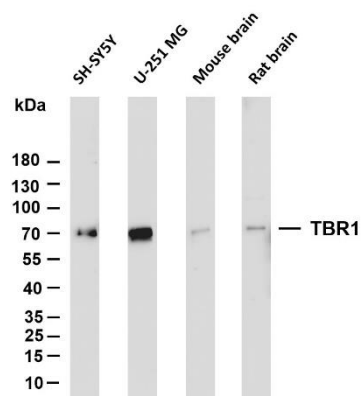
Specificity	Endogenous
-------------	------------

### Target Information

Gene name	TBR1
Protein Name	T-box brain protein 1 (T-brain-1) (TBR-1) (TES-56)

	Organism	Gene ID	UniProt ID
	Human	10716	Q16650
	Mouse		Q64336
Cellular Localization	Nuclear		
Tissue specificity	Brain		

## Validation Data



Various whole cell lysates were separated by 4-20% SDS-PAGE, and the membrane was blotted with anti-TBR1 antibody. The HRP conjugated Goat anti-Rabbit IgG(H + L) antibody was used to detect the antibody.

Lane 1: SH-SY5Y

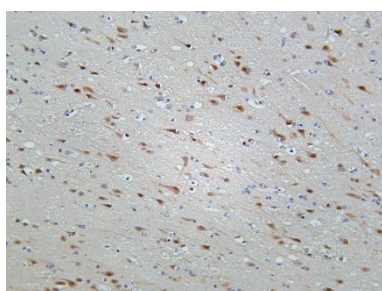
Lane 2: U-251 MG

Lane 3: Mouse brain

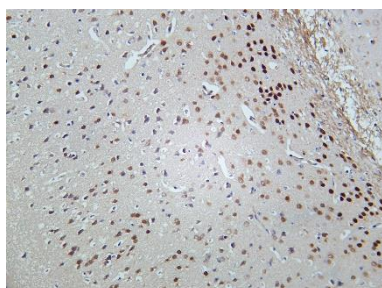
Lane 4: Rat brain

Predicted band size: 74kDa

Observed band size: 74kDa



Human brain was stained with Anti-TBR1 rabbit antibody



Mouse brain was stained with Anti-TBR1 rabbit antibody

For Research Use Only