

Aurora A Rabbit mAb (AR1018)

Key Features

Host Species:	Rabbit
Reactivity:	Human
Applications:	WB,IHC,IF,IP,ELISA
Isotype:	IgG,Kappa
MW:	46kD (Calculated) 46kD (Observed)

Recommended Dilution Ratios

IHC:	1:200-1000
WB:	1:1000-5000
IF:	1:200-1000
ELISA:	1:5000-20000
IP:	1:50-200

Storage

-15°C to -25°C/1 year (Do not lower than -25°C)

Basic Information

Clonality	Monoclonal
-----------	------------

Immunogen Information

Specificity	Endogenous
-------------	------------

Target Information

Gene name	AURKA AIK AIRK1 ARK1 AURA AYK1 BTAK IAK1 STK15 STK6
-----------	---

Protein Name	Aurora A
--------------	----------

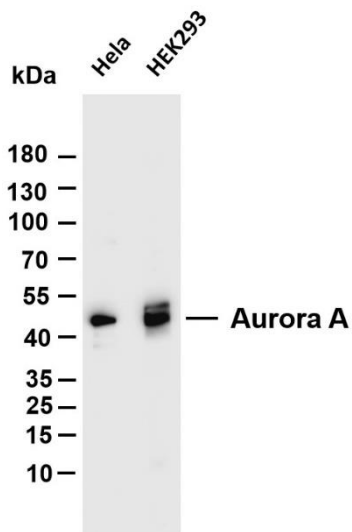
Organism	Gene ID	UniProt ID
Human	6790	O14965
Mouse	20878	P97477
Rat		P59241

Cellular Localization	Membranous
-----------------------	------------

Tissue specificity	Highly expressed in testis and weakly in skeletal muscle, thymus and spleen. Also highly expressed in colon, ovarian, prostate,
--------------------	---

neuroblastoma, breast and cervical cancer cell lines.

Validation Data



Various whole cell lysates were separated by 4-20% SDS-PAGE, and the membrane was blotted with anti-Aurora A antibody. The HRP conjugated Goat anti-Rabbit IgG(H + L) antibody was used to detect the antibody.

Lane 1: HeLa

Lane 2: HEK293

Predicted band size: 46kDa

Observed band size: 46kDa

For Research Use Only