

STAT1 α Rabbit mAb (AR1022)

Key Features

Host Species:	Rabbit
Reactivity:	Human, Mouse, Rat
Applications:	WB, IHC, IF, IP, ELISA
Isotype:	IgG, Kappa
MW:	87kD (Calculated) 90kD (Observed)

Recommended Dilution Ratios

IHC:	1:500-1000
WB:	1:1000-5000
IF:	1:200-1000
ELISA:	1:5000-20000
IP:	1:50-200

Storage

-15°C to -25°C/1 year (Do not lower than -25°C)

Basic Information

Clonality	Monoclonal
-----------	------------

Immunogen Information

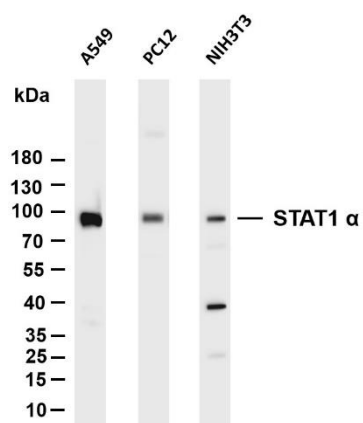
Specificity	Endogenous
-------------	------------

Target Information

Gene name	STAT1
Protein Name	Signal transducer and activator of transcription 1-alpha/beta (Transcription factor ISGF-3 components p91/p84)

	Organism	Gene ID	UniProt ID
	Human	6772	P42224
	Mouse		P42225
Cellular Localization	Nuclear		

Validation Data



Various whole cell lysates were separated by 4-20% SDS-PAGE, and the membrane was blotted with anti-STAT1 α antibody. The HRP conjugated Goat anti-Rabbit IgG(H + L) antibody was used to detect the antibody.

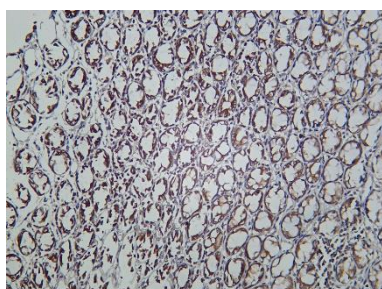
Lane 1: A549

Lane 2: PC12

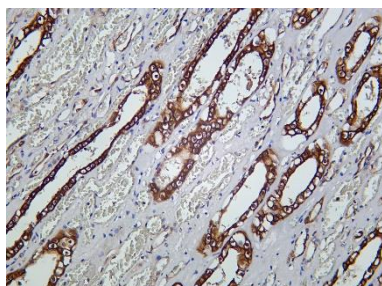
Lane 3: NIH3T3

Predicted band size: 87kDa

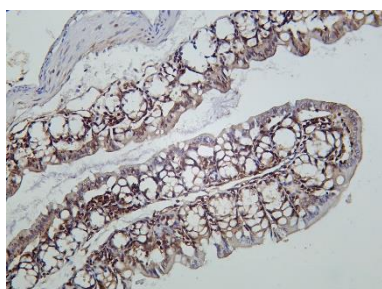
Observed band size: 90kDa



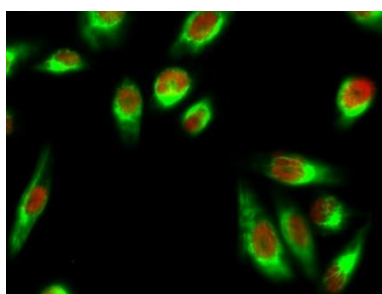
Rat colon was stained with Anti-STAT1 α rabbit antibody



Human kidney was stained with Anti-STAT1 α rabbit antibody



Mouse colon was stained with Anti-STAT1 α rabbit antibody



Immunofluorescence analysis of HeLa cell.

1. Stat1 Polyclonal Antibody(red) was diluted at 1:200(4° overnight). p53 Monoclonal Antibody(6C4)(green) was diluted at 1:200(4° overnight).
2. Goat Anti Rabbit Alexa Fluor 594 was diluted at 1:1000(room temperature, 50min). Goat Anti Mouse Alexa Fluor 488 was diluted at 1:1000(room temperature, 50min).