

## CD68 Rabbit mAb (AR1025)

### Key Features

Host Species:	Rabbit
Reactivity:	Human
Applications:	WB,IHC,IF,IP,ELISA
Isotype:	IgG,Kappa
MW:	37kD (Calculated) 120kD (Observed)

### Recommended Dilution Ratios

IHC:	1:200-1000
WB:	1:1000-5000
IF:	1:200-1000
ELISA:	1:5000-20000
IP:	1:50-200

### Storage

-15°C to -25°C/1 year (Do not lower than -25°C)

### Basic Information

Clonality	Monoclonal
-----------	------------

### Immunogen Information

Specificity	Endogenous
-------------	------------

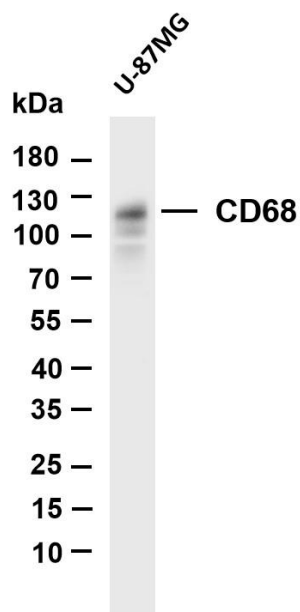
### Target Information

Gene name	CD68
Protein Name	Macrosialin (Gp110) (CD antigen CD68)

Organism	Gene ID	UniProt ID
Human	968	P34810

Cellular Localization	Membranous Highly expressed by blood monocytes and tissue macrophages. Also expressed in lymphocytes, fibroblasts and endothelial cells.
Tissue specificity	Expressed in many tumor cell lines which could allow them to attach to selectins on vascular endothelium, facilitating their dissemination to secondary sites.

## Validation Data

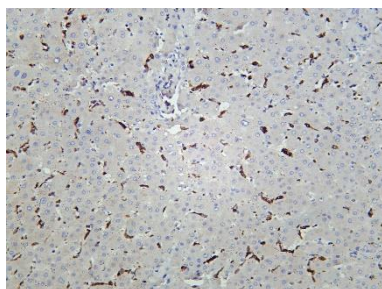


Various whole cell lysates were separated by 4-20% SDS-PAGE, and the membrane was blotted with anti-CD68 antibody. The HRP conjugated Goat anti-Rabbit IgG(H + L) antibody was used to detect the antibody.

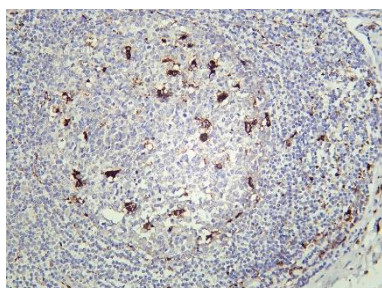
Lane 1: U-87MG

Predicted band size: 37kDa

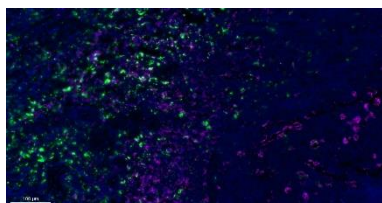
Observed band size: 120kDa



Human liver was stained with Anti-CD68 rabbit antibody



Human appendix was stained with Anti-CD68 rabbit antibody



Fluorescence multiplex immunohistochemical analysis of human tonsil tissue (formalin-fixed paraffin-embedded section). The immunostaining was performed by Sextuple-Fluorescence kit. CD68 rabbit mAb(RED) and CD163 mouse mAb(GREEN) was tested with different TSA Fluorescence reagent. Microscopy and pseudocoloring of individual dyes were performed using a Slideviewer Imaging System (Excilone).

For Research Use Only