

Caspase-3 Rabbit mAb (AR1026)

Key Features

Host Species:	Rabbit
Reactivity:	Human,Mouse,Rat
Applications:	WB,IHC,IF,IP,ELISA
Isotype:	IgG,Kappa
MW:	31.6kD (Calculated) 35kD (Observed)

Recommended Dilution Ratios

IHC:	1:200-1000
WB:	1:1000-5000
IF:	1:200-1000
ELISA:	1:5000-20000
IP:	1:50-200

Storage

-15°C to -25°C/1 year (Do not lower than -25°C)

Basic Information

Clonality	Monoclonal
-----------	------------

Immunogen Information

Specificity	Endogenous
-------------	------------

Target Information

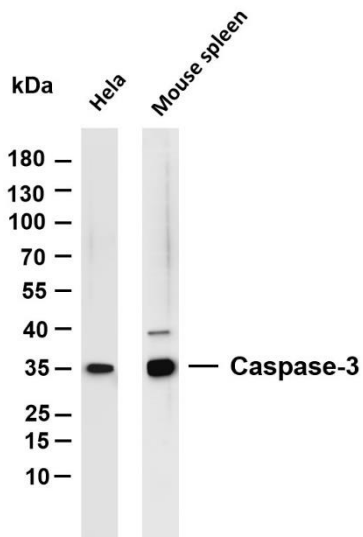
Gene name	CASP3
Protein Name	Caspase3

Organism	Gene ID	UniProt ID
Human	836	P42574
Mouse	12367	P70677
Rat	25402	P55213

Cellular Localization	Cytoplasm
Tissue specificity	Highly expressed in lung, spleen, heart, liver and kidney. Moderate levels in brain and skeletal muscle, and low in testis. Also found in

many cell lines, highest expression in cells of the immune system.

Validation Data



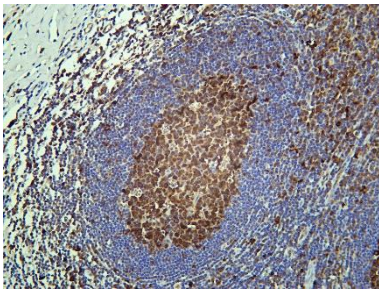
Various whole cell lysates were separated by 4-20% SDS-PAGE, and the membrane was blotted with anti-Caspase-3 antibody. The HRP conjugated Goat anti-Rabbit IgG(H + L) antibody was used to detect the antibody.

Lane 1: HeLa

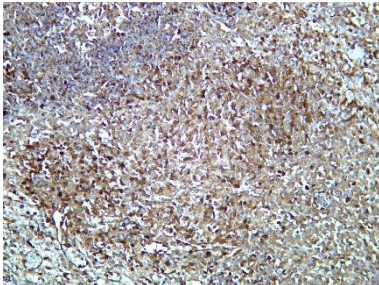
Lane 2: Mouse spleen

Predicted band size: 31.6kDa

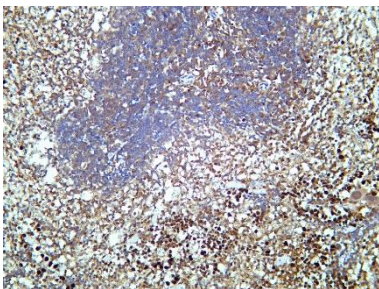
Observed band size: 35kDa



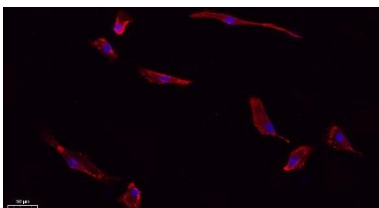
Human tonsil was stained with Anti-Caspase-3 rabbit antibody



Rat spleen was stained with Anti-Caspase-3 rabbit antibody



Mouse spleen was stained with Anti-Caspase-3 rabbit antibody



Immunofluorescence analysis of A549.

1. primary Antibody(red) was diluted at 1:200(4°C overnight).
2. Goat Anti Rabbit IgG (H&L) - Alexa Fluor 594 Secondary antibody was diluted at 1:1000(room temperature, 50min).
3. DAPI (blue) 10min.