

CIRBP Rabbit mAb (AR1024)

Key Features

Host Species:	Rabbit
Reactivity:	Human
Applications:	WB,IHC,IF,IP,ELISA
Isotype:	IgG,Kappa
MW:	19kD (Calculated) 19kD (Observed)

Recommended Dilution Ratios

IHC:	1:200-1000
WB:	1:1000-5000
IF:	1:200-1000
ELISA:	1:5000-20000
IP:	1:50-200

Storage

-15°C to -25°C/1 year (Do not lower than -25°C)

Basic Information

Clonality	Monoclonal
-----------	------------

Immunogen Information

Specificity	Endogenous
-------------	------------

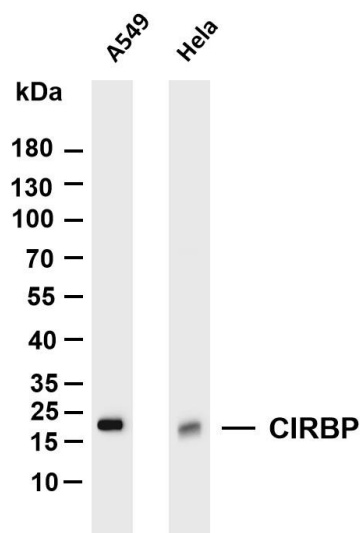
Target Information

Gene name	CIRBP A18HNRNP CIRP
Protein Name	Cold-inducible RNA-binding protein (A18 hnRNP) (Glycine-rich RNA-binding protein CIRP)

Organism	Gene ID	UniProt ID
Human	1153	Q14011
Mouse		P60824
Rat		P60825

Cellular Localization	Nuclear
Tissue specificity	Ubiquitous

Validation Data



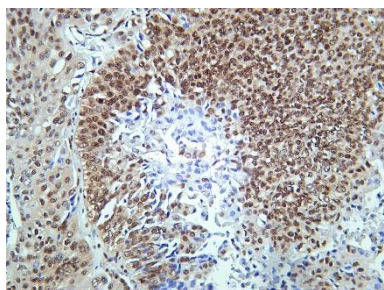
Various whole cell lysates were separated by 4-20% SDS-PAGE, and the membrane was blotted with anti-CIRBP antibody. The HRP conjugated Goat anti-Rabbit IgG(H + L) antibody was used to detect the antibody.

Lane 1: A549

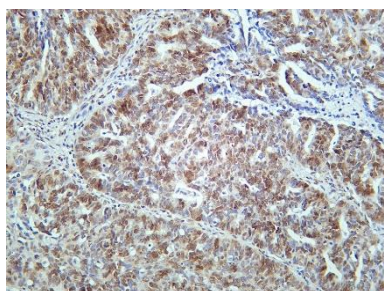
Lane 2: HeLa

Predicted band size: 19kDa

Observed band size: 19kDa



Human bladder carcinoma was stained with Anti-CIRBP rabbit antibody



Human colon carcinoma was stained with Anti-CIRBP rabbit antibody

For Research Use Only