

CDKN2A/p14ARF Rabbit mAb (AR1028)

Key Features

Host Species:	Rabbit
Reactivity:	Human
Applications:	WB,IF,IP,ELISA
Isotype:	IgG,Kappa
MW:	14kD (Calculated) 16kD (Observed)

Recommended Dilution Ratios

WB:	1:1000-5000
IF:	1:200-1000
ELISA:	1:5000-20000
IP:	1:50-200

Storage

-15°C to -25°C/1 year (Do not lower than -25°C)

Basic Information

Clonality	Monoclonal
-----------	------------

Immunogen Information

Specificity	Endogenous
-------------	------------

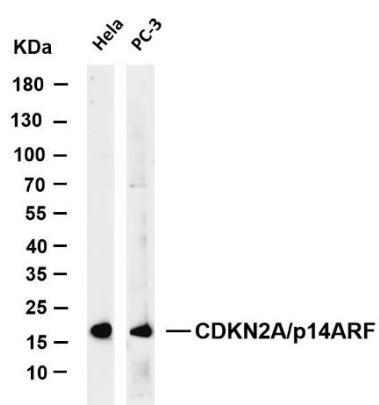
Target Information

Gene name	CDKN2A
Protein Name	Cyclin-dependent kinase inhibitor 2A isoform 4

Organism	Gene ID	UniProt ID
Human	1029	Q8N726
Mouse		Q64364

Cellular Localization	Nuclear
-----------------------	---------

Validation Data



Various whole cell lysates were separated by 4-20% SDS-PAGE, and the membrane was blotted with anti-CDKN2A/p14ARF antibody. The HRP-conjugated Goat anti-Rabbit IgG(H + L) antibody was used to detect the antibody.

Lane 1: HeLa

Lane 2: PC-3

Predicted band size: 14kDa

Observed band size: 16kDa

For Research Use Only