

FGFR1 Rabbit mAb (AR1029)

Key Features

Host Species:	Rabbit
Reactivity:	Human
Applications:	WB,IHC,IF,IP,ELISA
Isotype:	IgG,Kappa
MW:	92kD (Calculated) 145kD (Observed)

Recommended Dilution Ratios

IHC:	1:100-200
WB:	1:500-2000
IF:	1:200-1000
ELISA:	1:5000-20000
IP:	1:50-200

Storage

-15°C to -25°C/1 year (Do not lower than -25°C)

Basic Information

Clonality	Monoclonal
-----------	------------

Immunogen Information

Specificity	Endogenous
-------------	------------

Target Information

Gene name	FGFR1 BFGFR CEK FGFBR FLG FLT2 HBGFR
Protein Name	Fibroblast growth factor receptor 1

Organism	Gene ID	UniProt ID
Human	2260	P11362
Mouse	14182	P16092
Rat	79114	Q04589

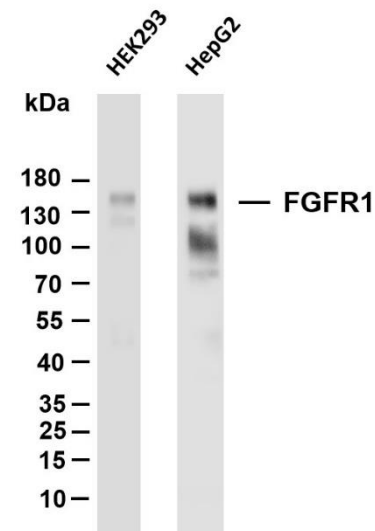
Cellular Localization	Cell membrane; Single-pass type I membrane protein. Nucleus. Cytoplasm, cytosol. Cytoplasmic vesicle. After ligand binding, both receptor and ligand are rapidly internalized. Can translocate to the nucleus after internalization, or by translocation from the
-----------------------	---

endoplasmic reticulum or Golgi apparatus to the cytosol, and from there to the nucleus.

Detected in astrocytoma, neuroblastoma and adrenal cortex cell lines. Some isoforms are detected in foreskin fibroblast cell lines, however isoform 17, isoform 18 and isoform 19 are not detected in these cells.

Tissue specificity

Validation Data



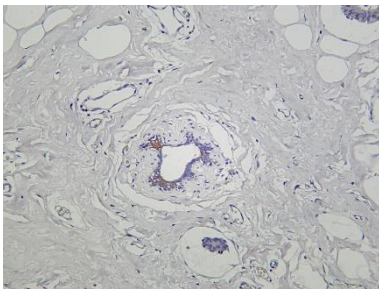
Various whole cell lysates were separated by 4-20% SDS-PAGE, and the membrane was blotted with anti-FGFR1 antibody. The HRP conjugated Goat anti-Rabbit IgG(H + L) antibody was used to detect the antibody.

Lane 1: HEK293

Lane 2: HepG2

Predicted band size: 92kDa

Observed band size: 145kDa



Human breast carcinoma was stained with Anti-FGFR1 rabbit antibody

For Research Use Only