

SIRT1 Rabbit mAb (AR1030)

Key Features

Host Species:	Rabbit
Reactivity:	Human, mouse
Applications:	WB,IHC,IF,IP,ELISA
Isotype:	IgG,Kappa
MW:	81.6kD (Calculated) 130kD (Observed)

Recommended Dilution Ratios

IHC:	1:100-200
WB:	1:1000-5000
IF:	1:200-1000
ELISA:	1:5000-20000
IP:	1:50-200

Storage

-15°C to -25°C/1 year (Do not lower than -25°C)

Basic Information

Clonality	Monoclonal
-----------	------------

Immunogen Information

Specificity	Endogenous
-------------	------------

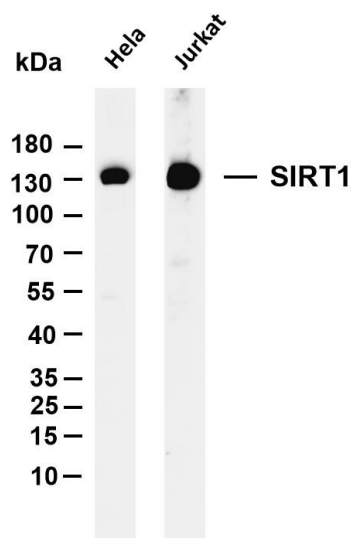
Target Information

Gene name	SIRT1
Protein Name	NAD-dependent protein deacetylase sirtuin-1

Organism	Gene ID	UniProt ID
Human	23411	Q96EB6
Mouse	93759	Q923E4

Cellular Localization	Nuclear
Tissue specificity	Widely expressed

Validation Data



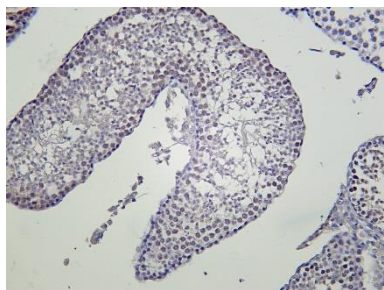
Various whole cell lysates were separated by 4-20% SDS-PAGE, and the membrane was blotted with anti-SIRT1 antibody. The HRP conjugated Goat anti-Rabbit IgG(H + L) antibody was used to detect the antibody.

Lane 1: HeLa

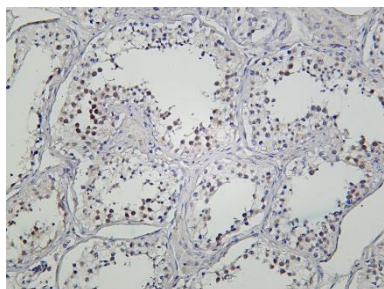
Lane 2: Jurkat

Predicted band size: 81.6kDa

Observed band size: 130kDa



Mouse testis was stained with Anti-SIRT1 rabbit antibody



Human testis was stained with Anti-SIRT1 rabbit antibody

For Research Use Only