

# AMPK $\alpha$ 1 Rabbit mAb (AR1031)

## Key Features

Host Species:	Rabbit
Reactivity:	Human, Mouse, Rat
Applications:	WB, IHC, IF, IP, ELISA
Isotype:	IgG, Kappa
MW:	64kD (Calculated) 64kD (Observed)

## Recommended Dilution Ratios

IHC:	1:100-200
WB:	1:1000-5000
IF:	1:200-1000
ELISA:	1:5000-20000
IP:	1:50-200

## Storage

-15°C to -25°C/1 year (Do not lower than -25°C)

## Basic Information

Clonality	Monoclonal
-----------	------------

## Immunogen Information

Specificity	Endogenous
-------------	------------

## Target Information

Gene name	PRKAA1
Protein Name	5'-AMP-activated protein kinase catalytic subunit alpha-1 (AMPK subunit alpha-1) (Acetyl CoA carboxylase kinase) (ACACA kinase) (Hydroxymethylglutaryl-CoA reductase kinase) (HMGCR kinase) (Tau-protein kinase PRK)

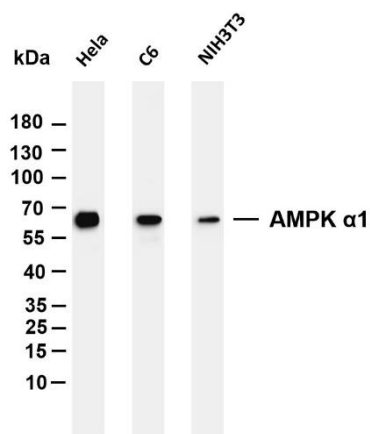
Organism	Gene ID	UniProt ID
Human	5562	Q13131
Mouse		Q5EG47
Rat		P54645

Cellular Localization	Cytoplasm
-----------------------	-----------

Tissue specificity

Brain, Intestine, Liver, Mammary gland, Platelet, Testis

## Validation Data



Various whole cell lysates were separated by 4-20% SDS-PAGE, and the membrane was blotted with anti-AMPK  $\alpha 1$  antibody. The HRP conjugated Goat anti-Rabbit IgG(H + L) antibody was used to detect the antibody.

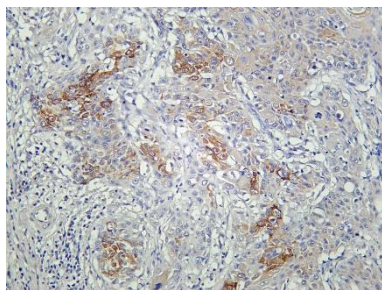
Lane 1: HeLa

Lane 2: C6

Lane 3: NIH3T3

Predicted band size: 64kDa

Observed band size: 64kDa



Human cervical carcinoma was stained with Anti-AMPK  $\alpha 1$  rabbit antibody

For Research Use Only