

HDAC2 Rabbit mAb (AR1032)

Key Features

| | |
|---------------|--------------------------------------|
| Host Species: | Rabbit |
| Reactivity: | Human, Mouse, Rat |
| Applications: | WB, IHC, IF, IP, ELISA |
| Isotype: | IgG, Kappa |
| MW: | 55kD (Calculated) 55kD (Observed) |

Recommended Dilution Ratios

| | |
|--------|--------------|
| IHC: | 1:200-500 |
| WB: | 1:1000-5000 |
| IF: | 1:200-1000 |
| ELISA: | 1:5000-20000 |
| IP: | 1:50-200 |

Storage

-15°C to -25°C/1 year (Do not lower than -25°C)

Basic Information

| | |
|-----------|------------|
| Clonality | Monoclonal |
|-----------|------------|

Immunogen Information

| | |
|-------------|------------|
| Specificity | Endogenous |
|-------------|------------|

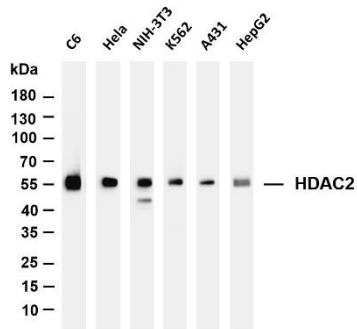
Target Information

| | |
|--------------|-----------------------|
| Gene name | HDAC2 |
| Protein Name | Histone deacetylase 2 |

| Organism | Gene ID | UniProt ID |
|----------|---------|------------|
| Human | 3066 | Q92769 |
| Mouse | 15182 | P70288 |

| | |
|-----------------------|---|
| Cellular Localization | Nuclear |
| Tissue specificity | Widely expressed; lower levels in brain and lung. |

Validation Data



Various whole cell lysates were separated by 4-20% SDS-PAGE, and the membrane was blotted with anti-HDAC2 antibody. The HRP conjugated Goat anti-Rabbit IgG(H + L) antibody was used to detect the antibody.

Lane 1: C6

Lane 2: Hela

Lane 3: NIH-3T3

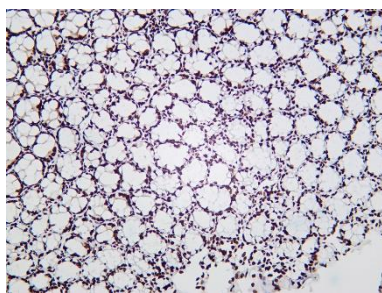
Lane 4: K562

Lane 5: A431

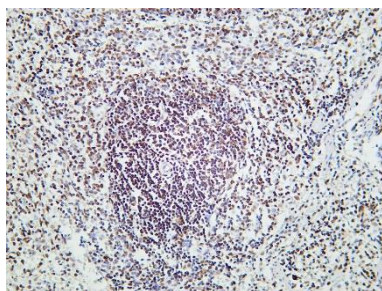
Lane 6: HepG2

Predicted band size: 55kDa

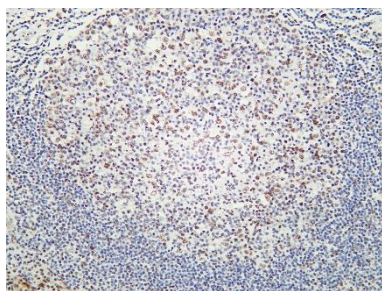
Observed band size: 55kDa



Mouse colon was stained with Anti-HDAC2 rabbit antibody



Rat spleen was stained with Anti-HDAC2 rabbit antibody



Human tonsil was stained with Anti-HDAC2 rabbit antibody

For Research Use Only