

CDK6 Rabbit mAb (AR1033)

Key Features

Host Species:	Rabbit
Reactivity:	Human
Applications:	WB,IHC,IF,IP,ELISA
Isotype:	IgG,Kappa
MW:	37kD (Calculated) 37kD (Observed)

Recommended Dilution Ratios

IHC:	1:200-1000
WB:	1:1000-5000
IF:	1:200-1000
ELISA:	1:5000-20000
IP:	1:50-200

Storage

-15°C to -25°C/1 year (Do not lower than -25°C)

Basic Information

Clonality	Monoclonal
-----------	------------

Immunogen Information

Specificity	Endogenous
-------------	------------

Target Information

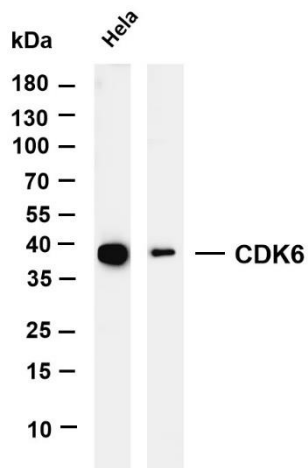
Gene name	CDK6 CDKN6
Protein Name	Cyclin-dependent kinase 6 (Cell division protein kinase 6) (Serine/threonine-protein kinase PLSTIRE)

Organism	Gene ID	UniProt ID
Human	1021	Q00534
Mouse	12571	Q64261

Cellular Localization	Nuclear
Tissue specificity	Expressed ubiquitously. Accumulates in squamous cell carcinomas, proliferating hematopoietic progenitor cells, beta-cells of pancreatic islets of Langerhans, and neuroblastomas. Reduced levels in

differentiating cells.

Validation Data



Various whole cell lysates were separated by 4-20% SDS-PAGE, and the membrane was blotted with anti-CDK6 antibody. The HRP conjugated Goat anti-Rabbit IgG(H + L) antibody was used to detect the antibody.

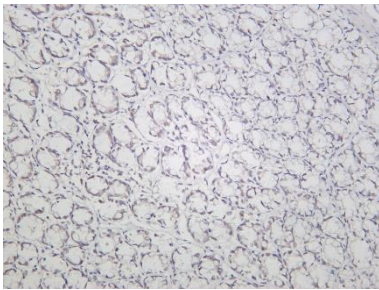
Lane 1: HeLa

Lane 2: Jurkat

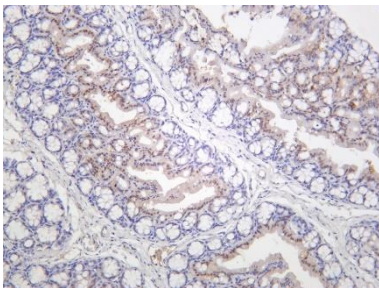
Lane 3: K562

Predicted band size: 37kDa

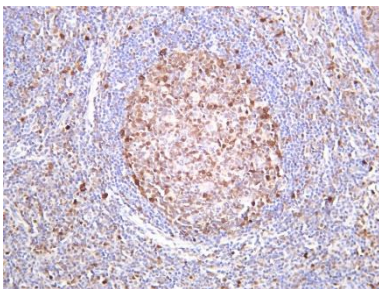
Observed band size: 37kDa



Rat colon tonsil was stained with Anti-CDK6 rabbit antibody



Mouse colon was stained with Anti-CDK6 rabbit antibody



Human tonsil was stained with Anti-CDK6 rabbit antibody

For Research Use Only