

DRP1 Rabbit mAb (AR1034)

Key Features

Host Species:	Rabbit
Reactivity:	Human,Mouse,Rat
Applications:	WB,IHC,IF,IP,ELISA
Isotype:	IgG,Kappa
MW:	82kD (Calculated) 82kD (Observed)

Recommended Dilution Ratios

IHC:	1:200-1000
WB:	1:1000-5000
IF:	1:200-1000
ELISA:	1:5000-20000
IP:	1:50-200

Storage

-15°C to -25°C/1 year (Do not lower than -25°C)

Basic Information

Clonality	Monoclonal
-----------	------------

Immunogen Information

Specificity	Endogenous
-------------	------------

Target Information

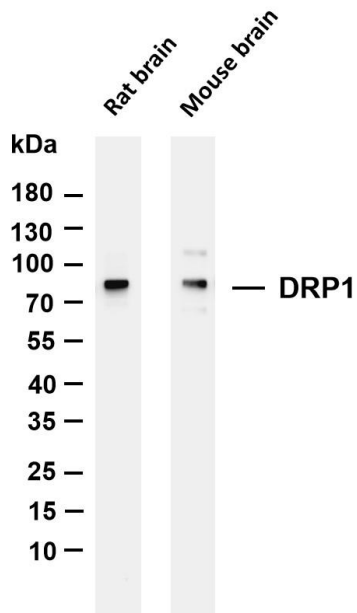
Gene name	DNM1L
Protein Name	Dynamin-1-like protein

Organism	Gene ID	UniProt ID
Human	10059	O00429
Mouse	74006	Q8K1M6
Rat	114114	O35303

Cellular Localization	Cytoplasm
Tissue specificity	Ubiquitously expressed with highest levels found in skeletal muscles, heart, kidney and brain. Isoform 1 is brain-specific. Isoform

2 and isoform 3 are predominantly expressed in testis and skeletal muscles respectively. Isoform 4 is weakly expressed in brain, heart and kidney. Isoform 5 is dominantly expressed in liver, heart and kidney. Isoform 6 is expressed in neurons.

Validation Data



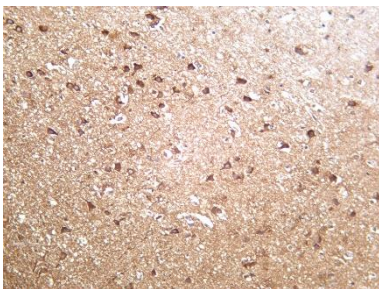
Various whole cell lysates were separated by 4-20% SDS-PAGE, and the membrane was blotted with anti-DRP1 antibody. The HRP conjugated Goat anti-Rabbit IgG(H + L) antibody was used to detect the antibody.

Lane 1: Rat brain

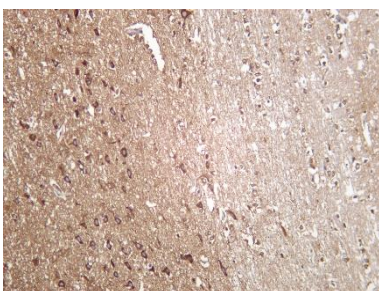
Lane 2: Mouse brain

Predicted band size: 82kDa

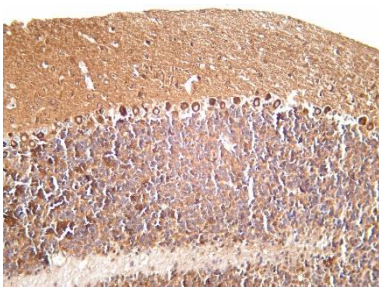
Observed band size: 82kDa



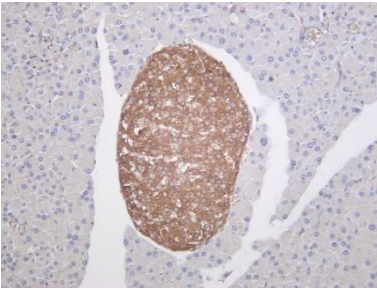
Human brain was stained with Anti-DRP1 rabbit antibody



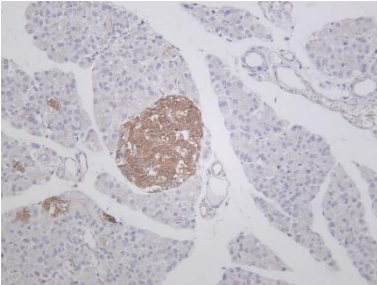
Mouse brain was stained with Anti-DRP1 rabbit antibody



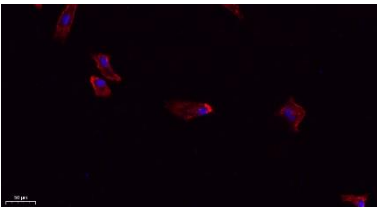
Rat brain was stained with Anti-DRP1 rabbit antibody



Mouse pancreas was stained with Anti-DRP1 rabbit antibody

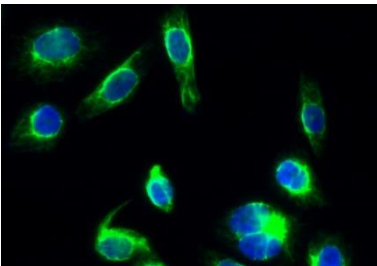


Rat pancreas was stained with Anti-DRP1 rabbit antibody



Immunofluorescence analysis of A549.

1. primary Antibody(red) was diluted at 1:200(4°C overnight).
2. Goat Anti Rabbit IgG (H&L) - Alexa Fluor 594 Secondary antibody was diluted at 1:1000(room temperature, 50min).
3. DAPI (blue) 10min.



Immunofluorescence analysis of Hela cell.

1. primary Antibody(green) was diluted at 1:200(4° overnight).
2. Goat Anti Rabbit Alexa Fluor 488 was diluted at 1:1000(room temperature, 50min).
3. DAPI (blue) 10min.

For Research Use Only