

IFITM3 Rabbit mAb (AR1036)

Key Features

Host Species:	Rabbit
Reactivity:	Human,Mouse,Rat
Applications:	WB,IHC,IF,IP,ELISA
Isotype:	IgG,Kappa
MW:	14kD (Calculated) 14kD (Observed)

Recommended Dilution Ratios

IHC:	1:200-1000
WB:	1:1000-5000
IF:	1:200-1000
ELISA:	1:5000-20000
IP:	1:50-200

Storage

-15°C to -25°C/1 year (Do not lower than -25°C)

Basic Information

Clonality	Monoclonal
-----------	------------

Immunogen Information

Specificity	Endogenous
-------------	------------

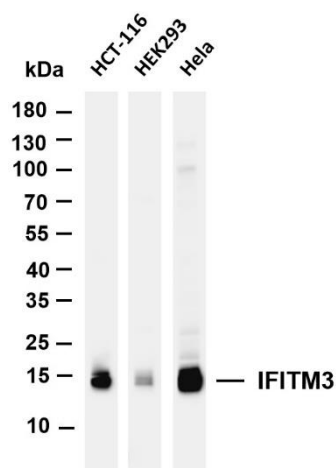
Target Information

Gene name	IFITM3
Protein Name	Interferon-induced transmembrane protein 3

Organism	Gene ID	UniProt ID
Human	10410	Q01628
Mouse		Q9CQW9

Cellular Localization	Membranous
Tissue specificity	Brain, Cervix, Vascular endothelial cell

Validation Data



Various whole cell lysates were separated by 4-20% SDS-PAGE, and the membrane was blotted with anti-IFITM3 antibody. The HRP conjugated Goat anti-Rabbit IgG(H + L) antibody was used to detect the antibody.

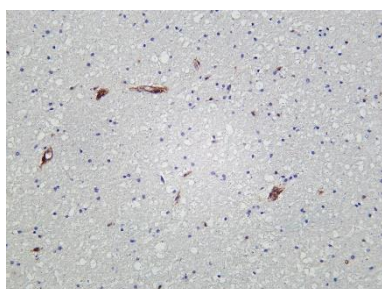
Lane 1: HCT-116

Lane 2: HEK293

Lane 3: HeLa

Predicted band size: 14kDa

Observed band size: 14kDa



Human brain was stained with Anti-IFITM3 rabbit antibody

For Research Use Only