

MiTF Rabbit mAb (AR1035)

Key Features

Host Species:	Rabbit
Reactivity:	Human, Mouse, Rat
Applications:	WB, IHC, IF, IP, ELISA
Isotype:	IgG, Kappa
MW:	59kD (Calculated) 55kD (Observed)

Recommended Dilution Ratios

IHC:	1:200-1000
WB:	1:1000-5000
IF:	1:200-1000
ELISA:	1:5000-20000
IP:	1:50-200

Storage

-15°C to -25°C/1 year (Do not lower than -25°C)

Basic Information

Clonality	Monoclonal
-----------	------------

Immunogen Information

Specificity	Endogenous
-------------	------------

Target Information

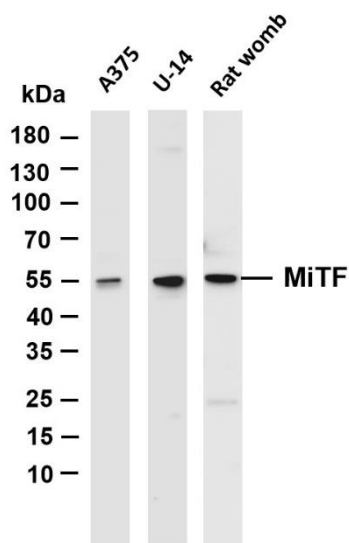
Gene name	MITF
Protein Name	Microphthalmia-associated transcription factor

Organism	Gene ID	UniProt ID
Human	4286	O75030
Mouse	17342	Q08874

Cellular Localization	Nuclear
Tissue specificity	Expressed in melanocytes (at protein level); [Isoform A2]: Expressed in the retinal pigment epithelium, brain, and placenta (PubMed:9647758). Expressed in the kidney (PubMed:9647758, PubMed:10578055); [Isoform C2]: Expressed in the kidney and

retinal pigment epithelium; [Isoform H1]: Expressed in the kidney; [Isoform H2]: Expressed in the kidney; [Isoform M1]: Expressed in melanocytes; [Isoform Mdel]: Expressed in melanocytes.

Validation Data



Various whole cell lysates were separated by 4-20% SDS-PAGE, and the membrane was blotted with anti-MiTF antibody. The HRP conjugated Goat anti-Rabbit IgG(H + L) antibody was used to detect the antibody.

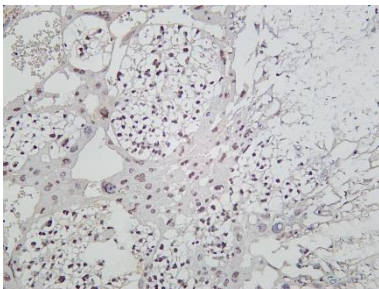
Lane 1: A375

Lane 2: U-14

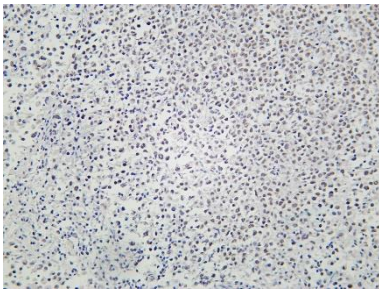
Lane 3: Rat womb

Predicted band size: 59kDa

Observed band size: 55kDa



Mouse placenta was stained with Anti-MiTF rabbit antibody



Human melanoma was stained with Anti-MiTF rabbit antibody

For Research Use Only