

## CD8 $\alpha$ Rabbit mAb (AR1037)

### Key Features

Host Species:	Rabbit
Reactivity:	Human, Mouse, Rat
Applications:	WB,IHC,IF,IP,ELISA
Isotype:	IgG, Kappa
MW:	26kD (Calculated) 35kD (Observed)

### Recommended Dilution Ratios

IHC:	1:200-1000
WB:	1:1000-5000
IF:	1:200-1000
ELISA:	1:5000-20000
IP:	1:50-200

### Storage

-15°C to -25°C/1 year (Do not lower than -25°C)

### Basic Information

Clonality	Monoclonal
-----------	------------

### Immunogen Information

Specificity	Endogenous
-------------	------------

### Target Information

Gene name	CD8A MAL
Protein Name	CD8 $\alpha$

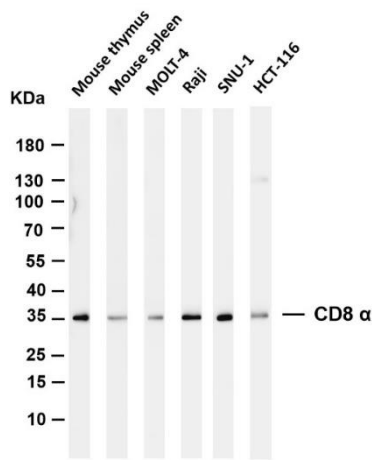
Organism	Gene ID	UniProt ID
Human	925	P01732

Cellular Localization	Membranous
-----------------------	------------

Tissue specificity	CD8 on thymus-derived T-cells usually consists of a disulfide-linked alpha/CD8A and a beta/CD8B chain. Less frequently, CD8 can be expressed as a CD8A homodimer. A subset of natural killer cells, memory T-cells, intraepithelial lymphocytes, monocytes and dendritic cells expresses CD8A homodimers. Expressed at the cell
--------------------	---

surface of plasmacytoid dendritic cells upon herpes simplex virus-1 stimulation.

Validation Data



Various whole cell lysates were separated by 4-20% SDS-PAGE, and the membrane was blotted with anti-CD8  $\alpha$  antibody. The HRP conjugated Goat anti-Rabbit IgG (H + L) antibody was used to detect the antibody.

Lane 1: Mouse thymus

Lane 2: Mouse spleen

Lane 3: MOLT-4

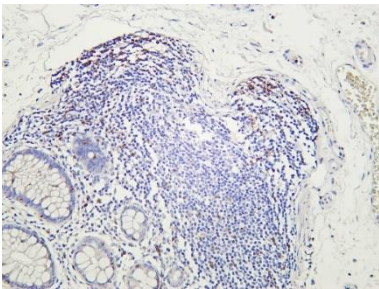
Lane 4: Raji

Lane 5: SNU-1

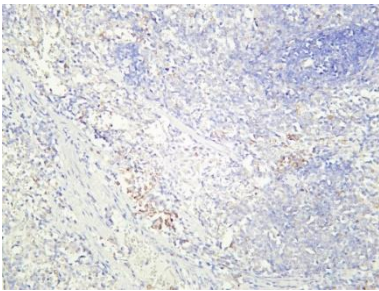
Lane 6: HCT-116

Predicted band size: 26kDa

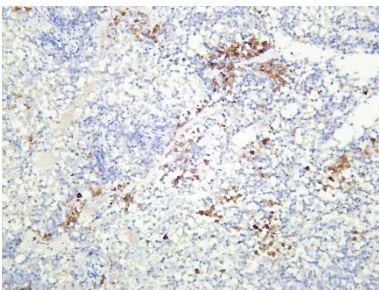
Observed band size: 35kDa



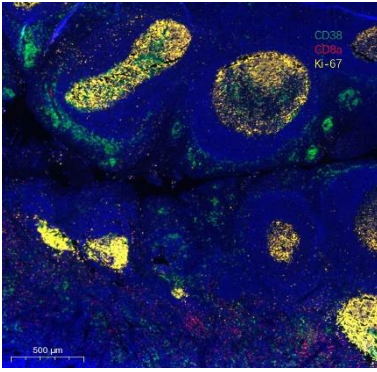
Human colon was stained with Anti-CD8  $\alpha$  rabbit antibody



Rat spleen was stained with Anti-CD8  $\alpha$  rabbit antibody



Mouse spleen was stained with Anti-CD8  $\alpha$  rabbit antibody



Fluorescence multiplex immunohistochemical analysis of human tonsil tissue (formalin-fixed paraffin-embedded section). The immunostaining was performed by Sextuple-Fluorescence kit. CD8  $\alpha$  rabbit mAb (RED) and CD38 mouse mAb (GREEN) and Ki67 rabbit mAb (YELLOW) was tested with different TSA Fluorescence reagent. Microscopy and pseudocoloring of individual dyes was performed using a Slideviewer Imaging System (Excilone).

For Research Use Only