

## TMEM173 Rabbit mAb (AR1038)

### Key Features

Host Species:	Rabbit
Reactivity:	Human, Mouse, Rat
Applications:	WB, IHC, IF, IP, ELISA
Isotype:	IgG, Kappa
MW:	42kD (Calculated) 37kD (Observed)

### Recommended Dilution Ratios

IHC:	1:200-1000
WB:	1:1000-5000
IF:	1:200-1000
ELISA:	1:5000-20000
IP:	1:50-200

### Storage

-15°C to -25°C/1 year (Do not lower than -25°C)

### Basic Information

Clonality	Monoclonal
-----------	------------

### Immunogen Information

Specificity	Endogenous
-------------	------------

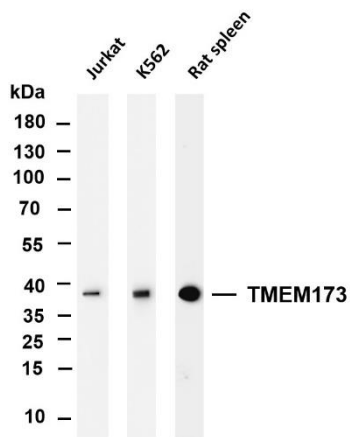
### Target Information

Gene name	TMEM173 ERS MTA STING
Protein Name	Transmembrane protein 173

Organism	Gene ID	UniProt ID
Human	340061	Q86WV6
Mouse	72512	Q3TBT3

Cellular Localization	Cytoplasmic, Membranous
Tissue specificity	Ubiquitously expressed. Expressed in skin endothelial cells, alveolar type 2 pneumocytes, bronchial epithelium and alveolar macrophages.

## Validation Data



Various whole cell lysates were separated by 4-20% SDS-PAGE, and the membrane was blotted with anti-TMEM173 antibody. The HRP-conjugated Goat anti-Rabbit IgG (H + L) antibody was used to detect the antibody.

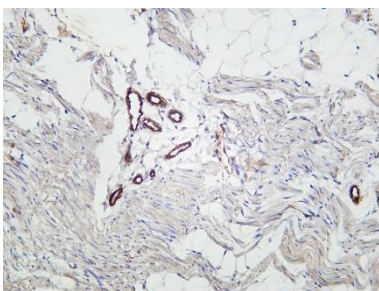
Lane 1: Jurkat

Lane 2: K562

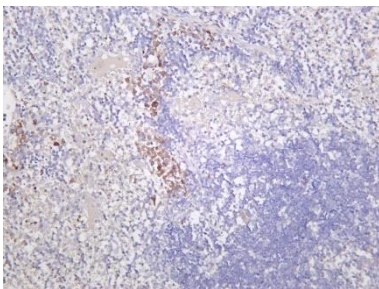
Lane 3: Rat spleen

Predicted band size: 42kDa

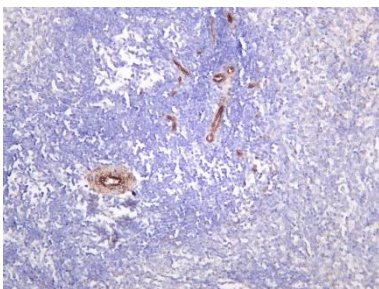
Observed band size: 37kDa



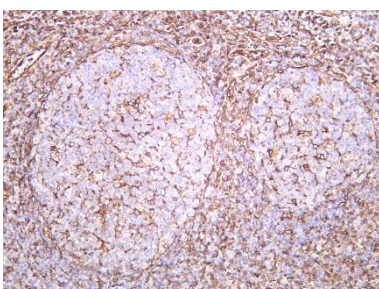
Rat colon was stained with Anti-TMEM173 rabbit antibody



Mouse spleen was stained with Anti-TMEM173 rabbit antibody



Rat spleen was stained with Anti-TMEM173 rabbit antibody



Human tonsil was stained with Anti-TMEM173 rabbit antibody