

Actin (pan) Rabbit mAb (AR1039)

Key Features

Host Species:	Rabbit
Reactivity:	Human, Mouse, Rat
Applications:	WB,IHC,IF,IP,ELISA
Isotype:	IgG, Kappa
MW:	42kD (Calculated) 42kD (Observed)

Recommended Dilution Ratios

IHC:	1:200-1000
WB:	1:1000-5000
IF:	1:200-1000
ELISA:	1:5000-20000
IP:	1:50-200

Storage

-15°C to -25°C/1 year (Do not lower than -25°C)

Basic Information

Clonality	Monoclonal
-----------	------------

Immunogen Information

Specificity	Endogenous
-------------	------------

Target Information

Gene name	ACTC1; ACTA1; ACTA2; ACTB; ACTG1; ACTG2
-----------	---

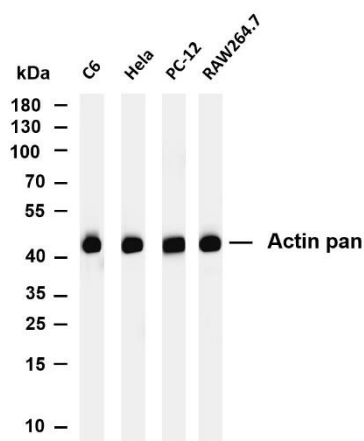
Protein Name	Actin pan
--------------	-----------

Organism	Gene ID	UniProt ID
Human	70; 58; 59; 60; 71; 72	P62736;P68032;P60709; P63261;P68133;P63267
Mouse	11475;11464; 11465; 11468; 11459;11461	

Cellular Localization	Cytoplasmic, Membranous
-----------------------	-------------------------

Tissue specificity	B-cell lymphoma, Brain, Cajal-Retziuscell, Eye, Fetal brain cortex, Foreskin, Hepatocellular carcinoma
--------------------	---

Validation Data



Various whole cell lysates were separated by 4-20% SDS-PAGE, and the membrane was blotted with anti-Actin pan antibody. The HRP conjugated Goat anti-Rabbit IgG (H + L) antibody was used to detect the antibody.

Lane 1: C6

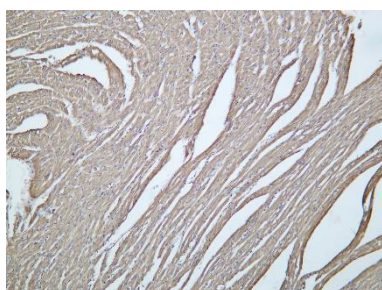
Lane 2: HeLa

Lane 3: PC-12

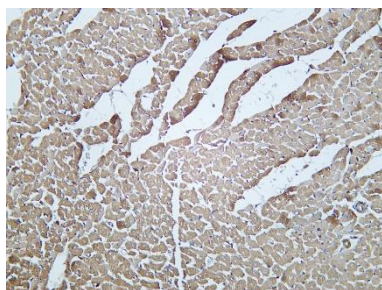
Lane 4: RAW264.7

Predicted band size: 42kDa

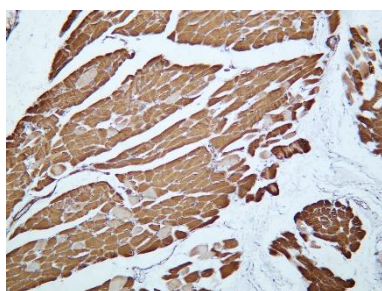
Observed band size: 42kDa



Mouse heart was stained with Anti-Actin pan rabbit antibody



Rat heart was stained with Anti-Actin pan rabbit antibody



Human skeletal muscle was stained with Anti-Actin pan rabbit antibody

For Research Use Only