

Catalase Rabbit mAb (AR1040)

Key Features

Host Species:	Rabbit
Reactivity:	Human, Mouse, Rat
Applications:	WB,IHC,IF,IP,ELISA
Isotype:	IgG,Kappa
MW:	60kD (Calculated) 60kD (Observed)

Recommended Dilution Ratios

IHC:	1:200-1000
WB:	1:1000-5000
IF:	1:200-1000
ELISA:	1:5000-20000
IP:	1:50-200

Storage

-15°C to -25°C/1 year (Do not lower than -25°C)

Basic Information

Clonality	Monoclonal
-----------	------------

Immunogen Information

Specificity	Endogenous
-------------	------------

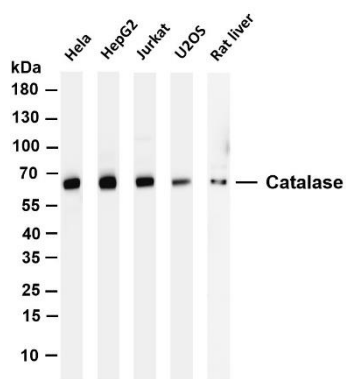
Target Information

Gene name	CAT
Protein Name	Catalase

Organism	Gene ID	UniProt ID
Human	847	P04040
Mouse		P24270

Cellular Localization	Cytoplasm
Tissue specificity	Brain, Cajal-Retzius cell, Erythrocyte, Eye, Fibroblast, Kidney, Liver, Placenta, Platelet, Skin, Uterus

Validation Data



Various whole cell lysates were separated by 4-20% SDS-PAGE, and the membrane was blotted with anti-Catalase antibody. The HRP conjugated Goat anti-Rabbit IgG (H + L) antibody was used to detect the antibody.

Lane 1: HeLa

Lane 2: HepG2

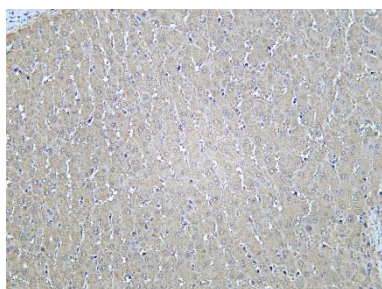
Lane 3: Jurkat

Lane 4: U2OS

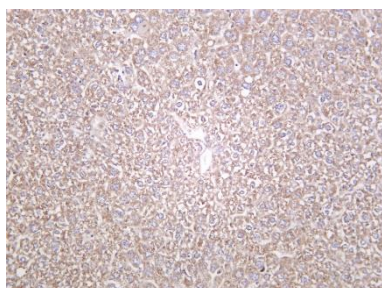
Lane 5: Rat liver

Predicted band size: 60kDa

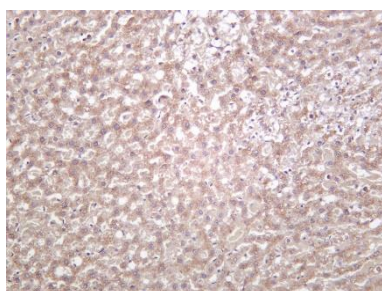
Observed band size: 60kDa



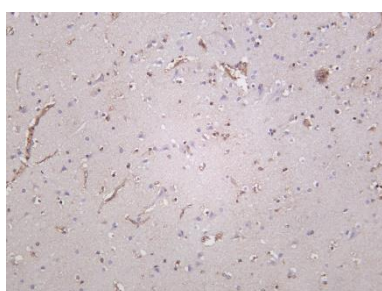
Human liver was stained with Anti-Catalase rabbit antibody



Mouse liver was stained with Anti-Catalase rabbit antibody



Rat liver was stained with Anti-Catalase rabbit antibody



Human brain was stained with Anti-Catalase rabbit antibody