

RIP Rabbit mAb (AR1041)

Key Features

Host Species:	Rabbit
Reactivity:	Human
Applications:	WB,IHC,IF,IP,ELISA
Isotype:	IgG,Kappa
MW:	76kD (Calculated) 76kD (Observed)

Recommended Dilution Ratios

IHC:	1:200-1000
WB:	1:1000-5000
IF:	1:200-1000
ELISA:	1:5000-20000
IP:	1:50-200

Storage

-15°C to -25°C/1 year (Do not lower than -25°C)

Basic Information

Clonality	Monoclonal
-----------	------------

Immunogen Information

Specificity	Endogenous
-------------	------------

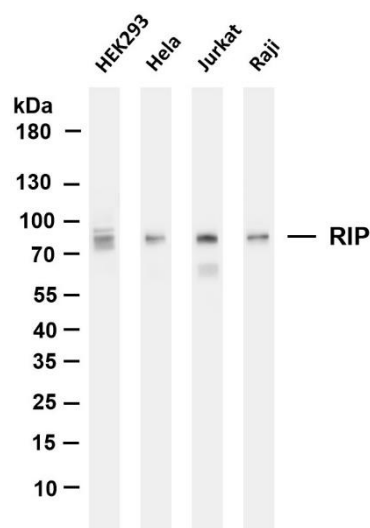
Target Information

Gene name	RIPK1 RIP RIP1
Protein Name	Receptor-interacting serine/threonine-protein kinase 1 (Cell death protein RIP) (Receptor-interacting protein 1) (RIP-1) (Serine/threonine-protein kinase RIP)

Organism	Gene ID	UniProt ID
Human	8737	Q13546
Mouse		Q60855

Cellular Localization	Cytoplasmic, Membranous
Tissue specificity	Leukemic T-cell, T-cell, Umbilical vein endothelial cell

Validation Data



Various whole cell lysates were separated by 4-20% SDS-PAGE, and the membrane was blotted with anti-RIP antibody. The HRP-conjugated Goat anti-Rabbit IgG (H + L) antibody was used to detect the antibody.

Lane1: HEK293

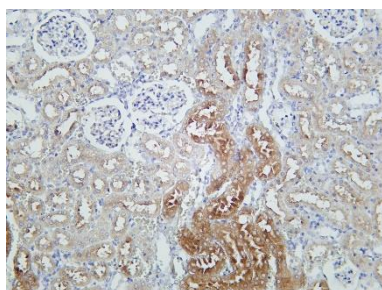
Lane 2: HeLa

Lane 3: Jurkat

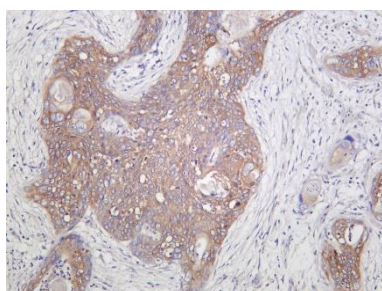
Lane 4: Raji

Predicted band size: 76kDa

Observed band size: 76kDa



Rat kidney was stained with Anti-RIP rabbit antibody



Human cervical carcinoma was stained with Anti-RIP rabbit antibody

For Research Use Only