

## Rad21 Rabbit mAb (AR1044)

### Key Features

Host Species:	Rabbit
Reactivity:	Human,Mouse,Rat
Applications:	WB,IHC,IF,IP,ELISA
Isotype:	IgG,Kappa
MW:	72kD (Calculated) 130kD (Observed)

### Recommended Dilution Ratios

IHC:	1:200-1000
WB:	1:1000-5000
IF:	1:200-1000
ELISA:	1:5000-20000
IP:	1:50-200

### Storage

-15°C to -25°C/1 year (Do not lower than -25°C)

### Basic Information

Clonality	Monoclonal
-----------	------------

### Immunogen Information

Specificity	Endogenous
-------------	------------

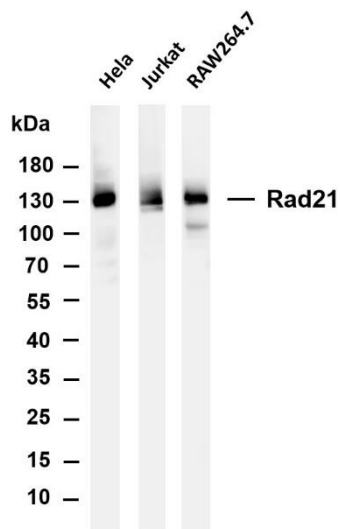
### Target Information

Gene name	RAD21
Protein Name	Double-strand-break repair protein rad21 homolog

Organism	Gene ID	UniProt ID
Human	5885	O60216
Mouse	19357	Q61550

Cellular Localization	Nuclear
Tissue specificity	Expressed in the gut (at protein level).

## Validation Data



Various whole cell lysates were separated by 4-20% SDS-PAGE, and the membrane was blotted with anti-Rad21 antibody. The HRP conjugated Goat anti-Rabbit IgG(H + L) antibody was used to detect the antibody.

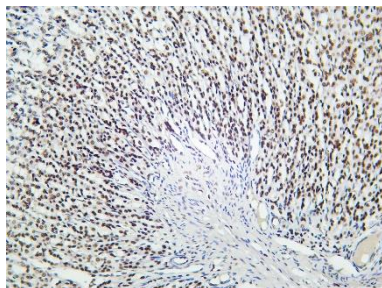
Lane 1: HeLa

Lane 2: Jurkat

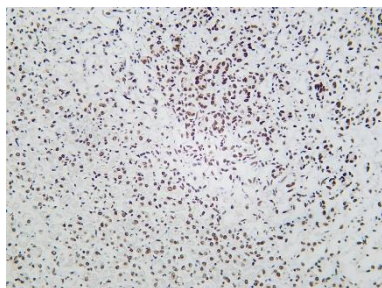
Lane 3: RAW264.7

Predicted band size: 72kDa

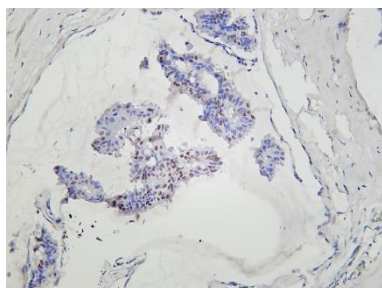
Observed band size: 130kDa



Rat stomach was stained with Anti-Rad21 rabbit antibody



Mouse stomach was stained with Anti-Rad21 rabbit antibody



Human breast carcinoma was stained with Anti-Rad21 rabbit antibody

For Research Use Only