

SP1 Rabbit mAb (AR1042)

Key Features

Host Species:	Rabbit
Reactivity:	Human
Applications:	WB,IHC,IF,IP,ELISA
Isotype:	IgG,Kappa
MW:	81kD (Calculated) 100kD (Observed)

Recommended Dilution Ratios

IHC:	1:200-1000
WB:	1:1000-5000
IF:	1:200-1000
ELISA:	1:5000-20000
IP:	1:50-200

Storage

-15°C to -25°C/1 year (Do not lower than -25°C)

Basic Information

Clonality	Monoclonal
-----------	------------

Immunogen Information

Specificity	Endogenous
-------------	------------

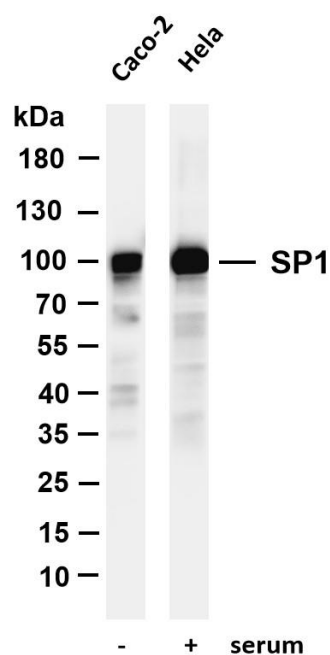
Target Information

Gene name	SP1
Protein Name	Transcription factor Sp1

Organism	Gene ID	UniProt ID
Human	6667	P08047
Mouse	20683	O89090
Rat	24790	Q01714

Cellular Localization	Nuclear
Tissue specificity	Up-regulated in adenocarcinomas of the stomach (at protein level). Isoform 3 is ubiquitously expressed at low levels.

Validation Data



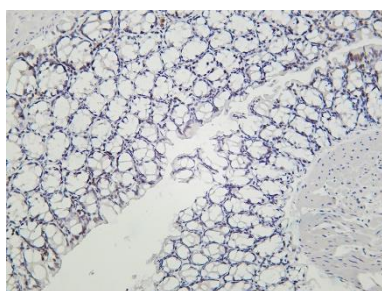
Various whole cell lysates were separated by 4-20% SDS-PAGE, and the membrane was blotted with anti-SP1 antibody. The HRP-conjugated Goat anti-Rabbit IgG (H + L) antibody was used to detect the antibody.

Lane 1: Caco-2

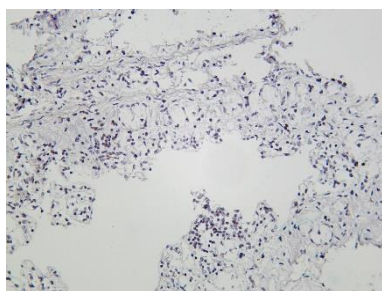
Lane 2: HeLa treated with serum for 30 minutes

Predicted band size: 81kDa

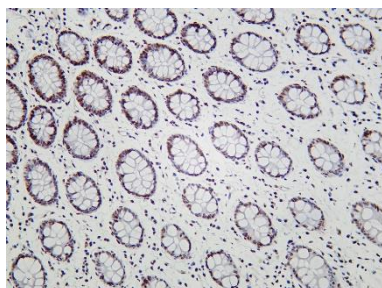
Observed band size: 100kDa



Mouse colon was stained with Anti-SP1 rabbit antibody



Rat colon was stained with Anti-SP1 rabbit antibody



Human colon was stained with Anti-SP1 rabbit antibody

For Research Use Only