

CD105 Rabbit mAb (AR1047)

Key Features

Host Species:	Rabbit
Reactivity:	Human
Applications:	WB,IHC,IF,IP,ELISA
Isotype:	IgG,Kappa
MW:	70kD (Calculated) 95kD (Observed)

Recommended Dilution Ratios

IHC:	1:100-200
WB:	1:1000-5000
IF:	1:200-1000
ELISA:	1:5000-20000
IP:	1:50-200

Storage

-15°C to -25°C/1 year (Do not lower than -25°C)

Basic Information

Clonality	Monoclonal
-----------	------------

Immunogen Information

Specificity	Endogenous
-------------	------------

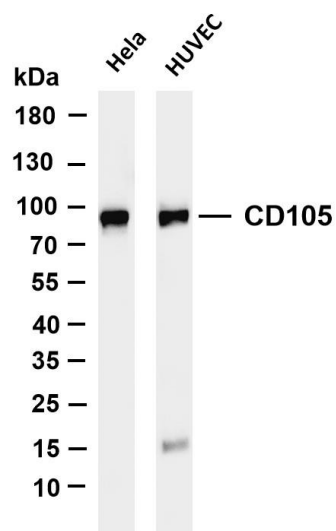
Target Information

Gene name	ENG END
Protein Name	Endoglin (CD antigen CD105)

Organism	Gene ID	UniProt ID
Human	2022	P17813

Cellular Localization	Cytoplasm
Tissue specificity	Detected on umbilical vein endothelial cells (PubMed:10625079). Detected in placenta (at protein level) (PubMed:1692830). Detected on endothelial cells (PubMed:1692830).

Validation Data



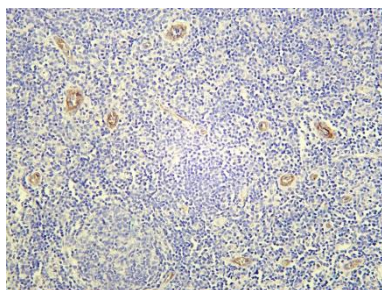
Various whole cell lysates were separated by 4-20% SDS-PAGE, and the membrane was blotted with anti-CD105 antibody. The HRP-conjugated Goat anti-Rabbit IgG(H + L) antibody was used to detect the antibody.

Lane 1: HeLa

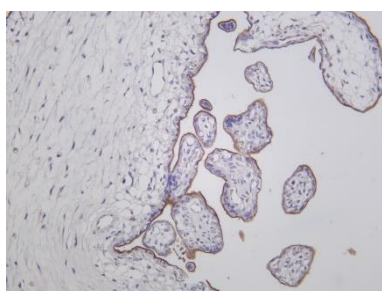
Lane 2: HUVEC

Predicted band size: 70kDa

Observed band size: 95kDa



Human tonsil was stained with Anti-CD105 rabbit antibody



Human placenta was stained with Anti-CD105 rabbit antibody

For Research Use Only